

○事業概況【令和5年1月】

(単位:千円、%)

| 当月中 | | 当月中 前年比 | 項目 | 当期中 | | 当月末 前年比 | |
|-----|-----------|------------|------------|--------|-------------|-------------|-------|
| 件数 | 金額 | | | 件数 | 金額 | | |
| / | / | / | 保証 申込 | 期首繰越 A | 17 | 298,272 | 8.8 |
| 128 | 2,619,928 | 118.4 | | 当期中 B | 1,442 | 27,373,640 | 122.8 |
| 0 | 0 | 0.0 | 拒絶 C | 0 | 0 | 0.0 | |
| 1 | 22,000 | 220.0 | 申込取消 D | 24 | 307,280 | 55.7 | |
| / | 5,000 | 500.0 | 査定減額 E | / | 79,768 | 55.8 | |
| / | / | / | 調査中 F | 20 | 336,830 | 142.4 | |
| / | / | / | 保証 承諾 | 期首繰越 G | 9,484 | 133,957,035 | 92.7 |
| 119 | 2,548,598 | 112.6 | | 当期中 H | 1,415 | 26,948,034 | 108.8 |
| 1 | 7,500 | 0.0 | 保証後取消 I | 5 | 18,500 | 9.6 | |
| 125 | 3,127,824 | 98.8 | 償還 J | 1,457 | 29,113,732 | 87.2 | |
| 3 | 61,882 | 54.1 | 代位弁済(元金) K | 41 | 372,373 | 53.9 | |
| / | / | / | 貸付報告未着 L | 63 | 1,354,800 | 178.0 | |
| / | / | / | 保証債務残高 M | 9,333 | 130,045,664 | 96.9 | |
| / | / | / | 期首求償権残高 N | 228 | 681,220 | 114.7 | |
| 3 | 61,882 | 54.1 | 代位 弁済 | 元金 | 41 | 372,373 | 53.9 |
| / | 228 | 186.7 | | 利息 | / | 996 | 80.4 |
| 3 | 62,109 | 54.2 | | 合計 O | 41 | 373,368 | 54.0 |
| 1 | 5,009 | 110.3 | 回収 P | 4 | 32,720 | 32.1 | |
| 0 | 0 | 0.0 | 償却 Q | 0 | 0 | 0.0 | |
| / | / | / | 求償権残高 R | 265 | 1,021,868 | 86.8 | |

A+B=C+D+E+F+H

G+H=I+J+K+L+M

N+O=P+Q+R

実績月別推移表

○保証承諾

(単位:千円、%)

| | 令和2年度 | | 令和3年度 | | 令和4年度 | | |
|-----|-------|-------------|-------|------------|-------|------------|-------|
| | 件数 | 金額 | 件数 | 金額 | 件数 | 金額 | 前年比 |
| 4月 | 319 | 7,795,493 | 207 | 3,834,285 | 120 | 2,217,116 | 57.8 |
| 5月 | 812 | 17,517,866 | 114 | 1,977,890 | 151 | 2,644,020 | 133.7 |
| 6月 | 1,123 | 20,131,194 | 123 | 1,978,055 | 154 | 2,563,542 | 129.6 |
| 7月 | 679 | 12,117,786 | 102 | 1,770,931 | 125 | 2,848,852 | 160.9 |
| 8月 | 476 | 8,671,744 | 106 | 2,249,900 | 150 | 2,724,739 | 121.1 |
| 9月 | 314 | 5,772,455 | 133 | 2,221,200 | 142 | 2,321,587 | 104.5 |
| 10月 | 248 | 3,992,188 | 108 | 2,058,751 | 115 | 2,151,968 | 104.5 |
| 11月 | 239 | 4,171,429 | 124 | 2,775,904 | 139 | 2,627,265 | 94.6 |
| 12月 | 349 | 5,970,515 | 166 | 3,627,830 | 200 | 4,300,347 | 118.5 |
| 1月 | 186 | 3,140,048 | 112 | 2,263,148 | 119 | 2,548,598 | 112.6 |
| 2月 | 293 | 5,662,876 | 109 | 1,896,900 | | | |
| 3月 | 830 | 20,713,269 | 146 | 2,580,010 | | | |
| 合計 | 5,868 | 115,656,863 | 1,550 | 29,234,804 | 1,415 | 26,948,034 | 108.8 |

○保証債務残高

(単位:千円、%)

| | 令和2年度 | | 令和3年度 | | 令和4年度 | | |
|-----|-------|-------------|-------|-------------|-------|-------------|------|
| | 件数 | 金額 | 件数 | 金額 | 件数 | 金額 | 前年比 |
| 4月 | 6,820 | 76,883,233 | 9,795 | 140,194,812 | 9,416 | 132,833,798 | 94.7 |
| 5月 | 7,186 | 86,644,724 | 9,772 | 139,761,556 | 9,404 | 132,179,302 | 94.6 |
| 6月 | 7,953 | 101,940,779 | 9,710 | 138,912,095 | 9,402 | 131,783,160 | 94.9 |
| 7月 | 8,499 | 113,134,567 | 9,668 | 138,349,055 | 9,410 | 132,149,780 | 95.5 |
| 8月 | 8,789 | 118,151,057 | 9,618 | 137,191,990 | 9,383 | 131,789,447 | 96.1 |
| 9月 | 8,998 | 122,182,658 | 9,579 | 136,464,484 | 9,359 | 131,256,948 | 96.2 |
| 10月 | 9,088 | 123,885,126 | 9,559 | 135,714,529 | 9,352 | 130,668,399 | 96.3 |
| 11月 | 9,166 | 125,224,716 | 9,526 | 135,092,822 | 9,329 | 130,256,652 | 96.4 |
| 12月 | 9,301 | 127,239,928 | 9,517 | 134,820,198 | 9,332 | 130,516,572 | 96.8 |
| 1月 | 9,373 | 127,498,202 | 9,483 | 134,162,337 | 9,333 | 130,045,664 | 96.9 |
| 2月 | 9,429 | 128,113,229 | 9,478 | 133,555,549 | | | |
| 3月 | 9,629 | 135,054,447 | 9,434 | 133,112,075 | | | |

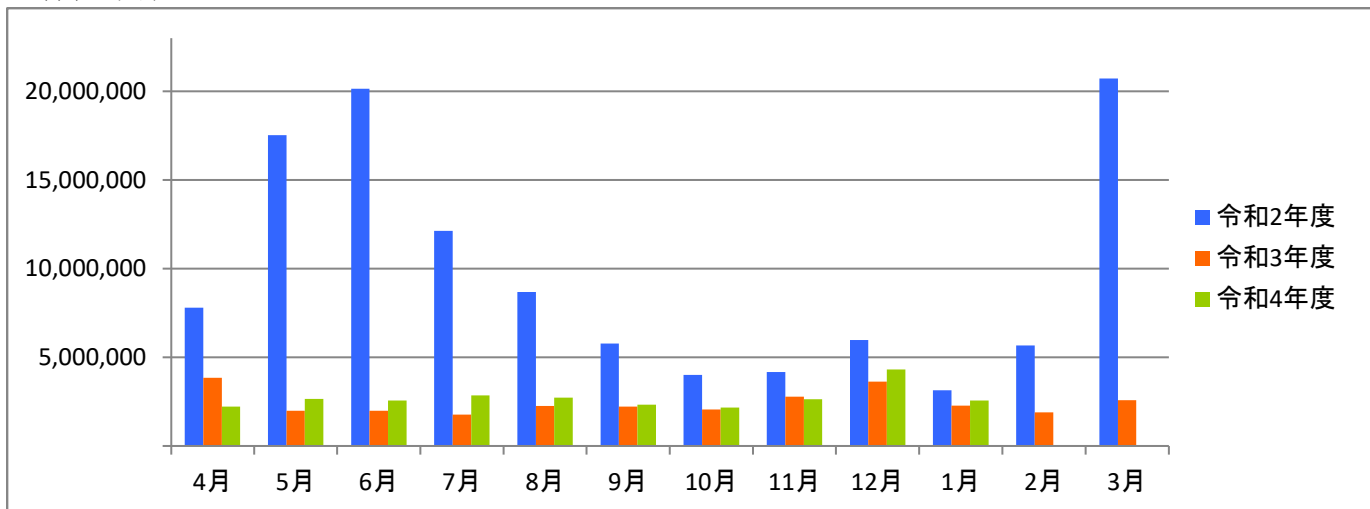
○代位弁済

(単位:千円、%)

| | 令和2年度 | | 令和3年度 | | 令和4年度 | | |
|-----|-------|---------|-------|---------|-------|---------|-------|
| | 件数 | 金額 | 件数 | 金額 | 件数 | 金額 | 前年比 |
| 4月 | 5 | 8,138 | 6 | 274,062 | 0 | 0 | 0.0 |
| 5月 | 2 | 34,931 | 2 | 20,600 | 2 | 6,287 | 30.5 |
| 6月 | 6 | 51,531 | 3 | 24,517 | 0 | 0 | 0.0 |
| 7月 | 3 | 8,140 | 4 | 83,235 | 7 | 76,015 | 91.3 |
| 8月 | 0 | 0 | 6 | 23,274 | 6 | 40,400 | 173.6 |
| 9月 | 3 | 77,539 | 4 | 14,149 | 0 | 0 | 0.0 |
| 10月 | 3 | 27,600 | 4 | 44,681 | 3 | 37,942 | 84.9 |
| 11月 | 3 | 4,111 | 2 | 55,004 | 9 | 64,172 | 116.7 |
| 12月 | 1 | 103 | 7 | 37,514 | 11 | 86,444 | 230.4 |
| 1月 | 3 | 18,180 | 11 | 114,503 | 3 | 62,109 | 54.2 |
| 2月 | 0 | 0 | 0 | 0 | | | |
| 3月 | 5 | 116,978 | 11 | 88,537 | | | |
| 合計 | 34 | 347,251 | 60 | 780,077 | 41 | 373,368 | 54.0 |

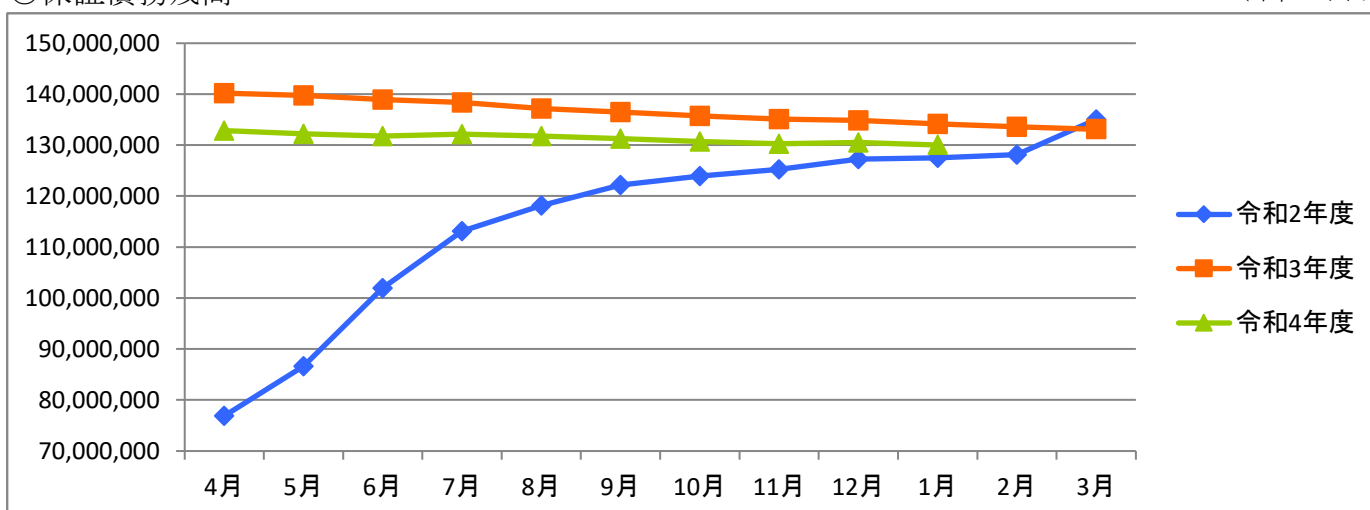
○保証承諾

(単位:千円)



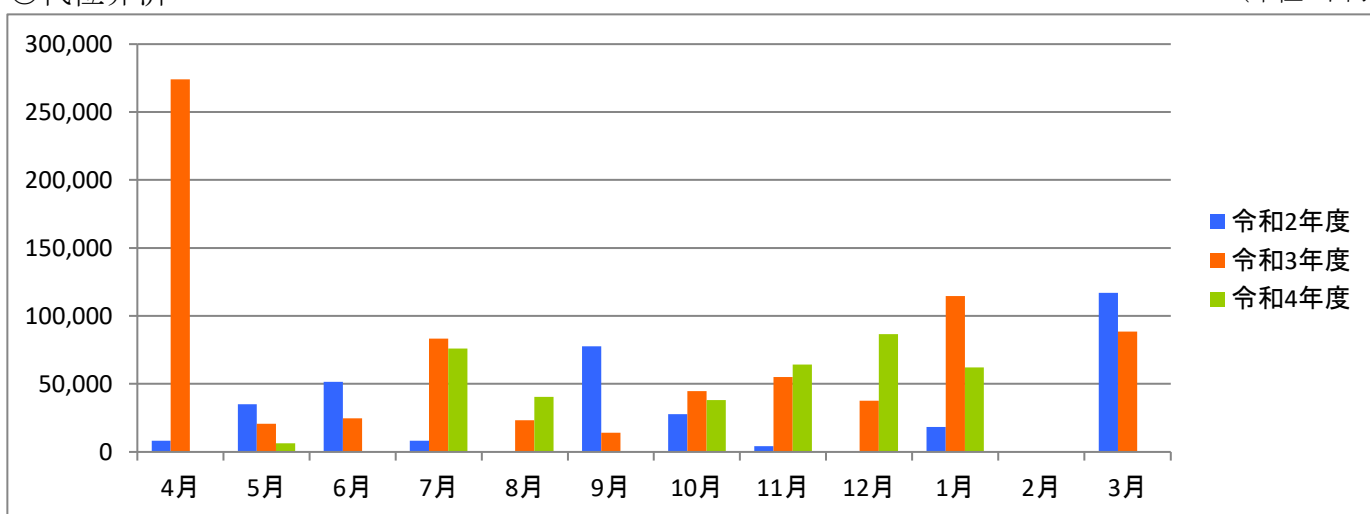
○保証債務残高

(単位:千円)



○代位弁済

(単位:千円)



資金使途別・金額別・期間別保証状況

○資金使途別保証状況【令和5年1月】

(単位:千円、%)

| 区分 | 保証承諾 | | | | | | | | 保証債務残高 | | | | 代位弁済 | | | |
|--------|------|-----------|-------|-------|------------|-------|-------|-------|-------------|-------|-------|-----|---------|-------|-------|--|
| | 当月中 | | | 当期中 | | | | 当期中 | | | | 当期中 | | | | |
| | 件数 | 金額 | 前年比 | 件数 | 金額 | 構成比 | 前年比 | 件数 | 金額 | 構成比 | 前年比 | 件数 | 金額 | 構成比 | 前年比 | |
| 運転資金 | 105 | 2,411,598 | 114.1 | 1,171 | 24,285,524 | 90.1 | 107.3 | 8,057 | 120,632,748 | 92.8 | 96.5 | 34 | 324,625 | 86.9 | 52.0 | |
| 設備資金 | 4 | 46,500 | 172.5 | 95 | 892,010 | 3.3 | 149.4 | 596 | 3,683,459 | 2.8 | 107.2 | 3 | 26,380 | 7.1 | 321.9 | |
| 運転設備資金 | 10 | 90,500 | 73.6 | 149 | 1,770,500 | 6.6 | 116.2 | 680 | 5,729,458 | 4.4 | 99.2 | 4 | 22,363 | 6.0 | 38.2 | |
| 合計 | 119 | 2,548,598 | 112.6 | 1,415 | 26,948,034 | 100.0 | 108.8 | 9,333 | 130,045,664 | 100.0 | 96.9 | 41 | 373,368 | 100.0 | 54.0 | |

○金額別保証状況【令和5年1月】

(単位:千円、%)

| 区分 | 保証承諾 | | | | | | | | 保証債務残高 | | | | 代位弁済 | | | |
|-----------|------|-----------|-------|-------|------------|-------|-------|-------|-------------|-------|-------|-----|---------|-------|-------|--|
| | 当月中 | | | 当期中 | | | | 当期中 | | | | 当期中 | | | | |
| | 件数 | 金額 | 前年比 | 件数 | 金額 | 構成比 | 前年比 | 件数 | 金額 | 構成比 | 前年比 | 件数 | 金額 | 構成比 | 前年比 | |
| 100万円以下 | 2 | 1,100 | 55.0 | 41 | 37,070 | 0.1 | 110.8 | 257 | 140,764 | 0.1 | 89.9 | 1 | 507 | 0.1 | 50.6 | |
| 200万円以下 | 4 | 6,400 | 43.8 | 78 | 139,228 | 0.5 | 98.4 | 535 | 593,302 | 0.5 | 89.6 | 3 | 2,055 | 0.6 | 116.1 | |
| 300万円以下 | 9 | 25,800 | 113.9 | 110 | 317,225 | 1.2 | 129.0 | 690 | 1,232,233 | 0.9 | 95.0 | 3 | 5,447 | 1.5 | 51.5 | |
| 500万円以下 | 9 | 40,100 | 80.8 | 178 | 822,588 | 3.1 | 98.8 | 1,172 | 3,580,294 | 2.8 | 92.5 | 8 | 27,603 | 7.4 | 105.2 | |
| 1,000万円以下 | 28 | 257,100 | 112.6 | 310 | 2,740,295 | 10.2 | 118.5 | 2,174 | 13,903,668 | 10.7 | 95.5 | 8 | 54,979 | 14.7 | 108.6 | |
| 1,500万円以下 | 6 | 85,000 | 154.5 | 114 | 1,566,783 | 5.8 | 124.8 | 731 | 7,283,483 | 5.6 | 97.0 | 6 | 62,964 | 16.9 | 160.9 | |
| 2,000万円以下 | 16 | 309,000 | 130.4 | 160 | 3,128,175 | 11.6 | 108.8 | 1,195 | 18,218,169 | 14.0 | 95.7 | 8 | 134,846 | 36.1 | 196.9 | |
| 3,000万円以下 | 16 | 449,098 | 104.7 | 140 | 3,927,773 | 14.6 | 104.0 | 1,163 | 26,258,238 | 20.2 | 96.1 | 3 | 47,175 | 12.6 | 98.5 | |
| 5,000万円以下 | 28 | 1,315,000 | 125.0 | 241 | 11,028,117 | 40.9 | 106.3 | 974 | 34,118,824 | 26.2 | 101.4 | 1 | 37,793 | 10.1 | 28.1 | |
| 6,000万円以下 | 1 | 60,000 | 54.5 | 16 | 928,000 | 3.4 | 78.8 | 200 | 10,500,653 | 8.1 | 99.6 | 0 | 0 | 0.0 | 0.0 | |
| 7,000万円以下 | 0 | 0 | 0.0 | 9 | 613,000 | 2.3 | 180.9 | 62 | 2,622,570 | 2.0 | 89.7 | 0 | 0 | 0.0 | 0.0 | |
| 8,000万円以下 | 0 | 0 | 0.0 | 12 | 944,780 | 3.5 | 108.2 | 120 | 6,914,544 | 5.3 | 94.0 | 0 | 0 | 0.0 | 0.0 | |
| 1億円以下 | 0 | 0 | 0.0 | 3 | 300,000 | 1.1 | 153.8 | 21 | 1,256,582 | 1.0 | 101.2 | 0 | 0 | 0.0 | 0.0 | |
| 2億円以下 | 0 | 0 | 0.0 | 3 | 455,000 | 1.7 | 140.9 | 39 | 3,422,340 | 2.6 | 85.0 | 0 | 0 | 0.0 | 0.0 | |
| 3億円以下 | 0 | 0 | 0.0 | 0 | 0 | 0.0 | 0.0 | 0 | 0 | 0.0 | 0.0 | 0 | 0 | 0.0 | 0.0 | |
| 4億円以下 | 0 | 0 | 0.0 | 0 | 0 | 0.0 | 0.0 | 0 | 0 | 0.0 | 0.0 | 0 | 0 | 0.0 | 0.0 | |
| 5億円以下 | 0 | 0 | 0.0 | 0 | 0 | 0.0 | 0.0 | 0 | 0 | 0.0 | 0.0 | 0 | 0 | 0.0 | 0.0 | |
| 5億円超 | 0 | 0 | 0.0 | 0 | 0 | 0.0 | 0.0 | 0 | 0 | 0.0 | 0.0 | 0 | 0 | 0.0 | 0.0 | |
| 合計 | 119 | 2,548,598 | 112.6 | 1,415 | 26,948,034 | 100.0 | 108.8 | 9,333 | 130,045,664 | 100.0 | 96.9 | 41 | 373,368 | 100.0 | 54.0 | |

○期間別保証状況【令和5年1月】

(単位:千円、%)

| 区分 | 保証承諾 | | | | | | | | 保証債務残高 | | | | 代位弁済 | | | |
|-------|------|-----------|-------|-------|------------|-------|-------|-------|-------------|-------|-------|-----|---------|-------|------|--|
| | 当月中 | | | 当期中 | | | | 当期中 | | | | 当期中 | | | | |
| | 件数 | 金額 | 前年比 | 件数 | 金額 | 構成比 | 前年比 | 件数 | 金額 | 構成比 | 前年比 | 件数 | 金額 | 構成比 | 前年比 | |
| 3ヵ月以下 | 1 | 10,000 | 45.5 | 12 | 109,670 | 0.4 | 40.7 | 7 | 117,583 | 0.1 | 71.3 | 0 | 0 | 0.0 | 0.0 | |
| 6ヵ月以下 | 0 | 0 | 0.0 | 35 | 645,620 | 2.4 | 171.1 | 26 | 360,550 | 0.3 | 133.7 | 0 | 0 | 0.0 | 0.0 | |
| 1年以下 | 47 | 1,291,198 | 95.5 | 436 | 11,542,783 | 42.8 | 94.0 | 536 | 13,522,993 | 10.4 | 95.4 | 2 | 29,666 | 7.9 | 49.3 | |
| 2年以下 | 5 | 56,500 | 39.2 | 100 | 1,220,500 | 4.5 | 114.5 | 264 | 2,996,024 | 2.3 | 100.2 | 0 | 0 | 0.0 | 0.0 | |
| 3年以下 | 3 | 4,100 | 25.7 | 36 | 170,650 | 0.6 | 38.6 | 524 | 4,844,360 | 3.7 | 75.6 | 0 | 0 | 0.0 | 0.0 | |
| 4年以下 | 1 | 1,500 | 0.0 | 13 | 50,870 | 0.2 | 146.7 | 92 | 387,167 | 0.3 | 86.6 | 0 | 0 | 0.0 | 0.0 | |
| 5年以下 | 15 | 296,500 | 511.2 | 220 | 2,017,728 | 7.5 | 143.6 | 1,283 | 6,970,388 | 5.4 | 98.1 | 6 | 12,594 | 3.4 | 66.9 | |
| 7年以下 | 26 | 378,900 | 152.2 | 338 | 4,768,237 | 17.7 | 181.0 | 2,405 | 20,571,182 | 15.8 | 94.7 | 13 | 85,779 | 23.0 | 87.2 | |
| 10年以下 | 21 | 509,900 | 124.1 | 215 | 6,151,634 | 22.8 | 104.8 | 4,004 | 75,617,059 | 58.1 | 99.7 | 19 | 231,744 | 62.1 | 92.7 | |
| 10年超 | 0 | 0 | 0.0 | 10 | 270,342 | 1.0 | 71.5 | 192 | 4,658,359 | 3.6 | 93.0 | 1 | 13,585 | 3.6 | 10.0 | |
| 合計 | 119 | 2,548,598 | 112.6 | 1,415 | 26,948,034 | 100.0 | 108.8 | 9,333 | 130,045,664 | 100.0 | 96.9 | 41 | 373,368 | 100.0 | 54.0 | |

○業種別保証状況【令和5年1月】

(単位:千円、%)

| 区分 | 保証承諾 | | | | | | | 保証債務残高 | | | | 代位弁済 | | | |
|---------------------|------|-----------|---------|-------|------------|-------|-------|--------|-------------|-------|-------|------|---------|-------|-------|
| | 当月中 | | | 当期中 | | | | 当期中 | | | | 当期中 | | | |
| | 件数 | 金額 | 前年比 | 件数 | 金額 | 構成比 | 前年比 | 件数 | 金額 | 構成比 | 前年比 | 件数 | 金額 | 構成比 | 前年比 |
| 製 造 業 | 20 | 441,500 | 127.5 | 210 | 4,233,488 | 15.7 | 107.8 | 1,454 | 21,365,914 | 16.4 | 95.6 | 1 | 2,000 | 0.5 | 2.3 |
| 食 料 品 工 業 | 1 | 20,000 | 62.5 | 23 | 764,142 | 2.8 | 120.5 | 136 | 2,627,323 | 2.0 | 97.0 | 0 | 0 | 0.0 | 0.0 |
| 織 維 品 工 業 | 5 | 98,000 | 108.9 | 48 | 596,452 | 2.2 | 64.9 | 307 | 3,821,567 | 2.9 | 95.7 | 0 | 0 | 0.0 | 0.0 |
| 木 材・木 製 品 工 業 | 0 | 0 | 0.0 | 2 | 21,370 | 0.1 | 59.4 | 29 | 347,277 | 0.3 | 89.8 | 0 | 0 | 0.0 | 0.0 |
| 家 具・建 具 工 業 | 2 | 53,500 | 89.2 | 9 | 235,500 | 0.9 | 362.3 | 62 | 819,272 | 0.6 | 106.7 | 0 | 0 | 0.0 | 0.0 |
| 紙 工 業 | 0 | 0 | 0.0 | 6 | 150,000 | 0.6 | 57.7 | 49 | 982,346 | 0.8 | 103.3 | 0 | 0 | 0.0 | 0.0 |
| 印 刷・製 本 業 | 1 | 5,000 | 100.0 | 26 | 583,744 | 2.2 | 126.2 | 148 | 2,179,268 | 1.7 | 93.8 | 0 | 0 | 0.0 | 0.0 |
| 化 学 工 業 | 1 | 40,000 | 0.0 | 4 | 122,000 | 0.5 | 206.8 | 19 | 328,714 | 0.3 | 88.8 | 0 | 0 | 0.0 | 0.0 |
| 石 油・石 炭 製 品 工 業 | 0 | 0 | 0.0 | 0 | 0 | 0.0 | 0.0 | 0 | 0 | 0.0 | 0.0 | 0 | 0 | 0.0 | 0.0 |
| ゴ ム・プ ラ ス チ ッ ク 工 業 | 1 | 40,000 | 0.0 | 11 | 212,680 | 0.8 | 107.1 | 71 | 993,581 | 0.8 | 97.1 | 0 | 0 | 0.0 | 0.0 |
| ゴ ム 製 品 製 造 業 | 0 | 0 | 0.0 | 0 | 0 | 0.0 | 0.0 | 4 | 56,495 | 0.0 | 95.9 | 0 | 0 | 0.0 | 0.0 |
| 皮 革 工 業 | 0 | 0 | 0.0 | 0 | 0 | 0.0 | 0.0 | 0 | 0 | 0.0 | 0.0 | 0 | 0 | 0.0 | 0.0 |
| 窯 業 | 0 | 0 | 0.0 | 4 | 185,000 | 0.7 | 925.0 | 22 | 524,778 | 0.4 | 135.4 | 0 | 0 | 0.0 | 0.0 |
| 機 械 工 業 | 5 | 65,000 | 67.0 | 21 | 487,100 | 1.8 | 85.1 | 122 | 2,342,711 | 1.8 | 93.4 | 0 | 0 | 0.0 | 0.0 |
| 電 気 機 器 工 業 | 0 | 0 | 0.0 | 3 | 135,000 | 0.5 | 177.6 | 26 | 441,847 | 0.3 | 96.7 | 0 | 0 | 0.0 | 0.0 |
| 車 輜 工 業 | 0 | 0 | 0.0 | 4 | 40,000 | 0.1 | 133.3 | 26 | 298,288 | 0.2 | 93.1 | 0 | 0 | 0.0 | 0.0 |
| 船 舶 工 業 | 0 | 0 | 0.0 | 0 | 0 | 0.0 | 0.0 | 0 | 0 | 0.0 | 0.0 | 0 | 0 | 0.0 | 0.0 |
| 金 属 工 業 | 3 | 70,000 | 700.0 | 16 | 348,000 | 1.3 | 148.3 | 138 | 2,582,441 | 2.0 | 96.0 | 0 | 0 | 0.0 | 0.0 |
| ソ フ ト ウ ェ ア 業 | 0 | 0 | 0.0 | 7 | 119,000 | 0.4 | 83.8 | 59 | 837,533 | 0.6 | 79.0 | 0 | 0 | 0.0 | 0.0 |
| 情 報 処 理 サ ー ビ ス 業 | 0 | 0 | 0.0 | 0 | 0 | 0.0 | 0.0 | 1 | 10,000 | 0.0 | 95.2 | 0 | 0 | 0.0 | 0.0 |
| そ の 他 の 工 業 | 1 | 50,000 | 2,127.7 | 26 | 233,500 | 0.9 | 106.4 | 235 | 2,172,473 | 1.7 | 92.8 | 1 | 2,000 | 0.5 | 79.7 |
| 農 林 漁 業 | 0 | 0 | 0.0 | 0 | 0 | 0.0 | 0.0 | 2 | 6,033 | 0.0 | 45.3 | 0 | 0 | 0.0 | 0.0 |
| 鉱 業 | 0 | 0 | 0.0 | 0 | 0 | 0.0 | 0.0 | 4 | 83,024 | 0.1 | 77.2 | 0 | 0 | 0.0 | 0.0 |
| 建 設 業 | 26 | 692,800 | 86.1 | 387 | 6,838,588 | 25.4 | 102.1 | 2,376 | 32,659,903 | 25.1 | 96.1 | 21 | 217,370 | 58.2 | 137.3 |
| 卸 売 業 | 21 | 530,500 | 139.2 | 240 | 6,361,850 | 23.6 | 124.9 | 1,527 | 28,341,131 | 21.8 | 98.5 | 2 | 37,622 | 10.1 | 9.6 |
| 小 売 業 | 19 | 442,900 | 118.4 | 174 | 3,090,211 | 11.5 | 97.1 | 1,203 | 16,208,234 | 12.5 | 96.6 | 4 | 23,943 | 6.4 | 81.3 |
| 飲 食 店 | 8 | 99,600 | 142.3 | 66 | 992,209 | 3.7 | 129.6 | 588 | 5,221,330 | 4.0 | 96.7 | 7 | 25,765 | 6.9 | 474.8 |
| 運 送 倉 庫 業 | 1 | 18,000 | 0.0 | 31 | 724,000 | 2.7 | 115.2 | 165 | 3,228,942 | 2.5 | 100.3 | 0 | 0 | 0.0 | 0.0 |
| サ ー ビ ス 業 | 20 | 230,200 | 152.5 | 256 | 3,770,190 | 14.0 | 107.1 | 1,685 | 18,913,692 | 14.5 | 97.4 | 4 | 21,951 | 5.9 | 122.1 |
| 不 動 産 業 | 2 | 23,098 | 64.0 | 28 | 323,498 | 1.2 | 79.7 | 205 | 1,942,168 | 1.5 | 97.6 | 1 | 6,925 | 1.9 | 0.0 |
| そ の 他 の 産 業 | 2 | 70,000 | 70.0 | 23 | 614,000 | 2.3 | 120.7 | 124 | 2,075,294 | 1.6 | 98.8 | 1 | 37,793 | 10.1 | 0.0 |
| 合 計 | 119 | 2,548,598 | 112.6 | 1,415 | 26,948,034 | 100.0 | 108.8 | 9,333 | 130,045,664 | 100.0 | 96.9 | 41 | 373,368 | 100.0 | 54.0 |

○金融機関別保証状況【令和5年1月】

(単位:千円、%)

| 区分 | 保証承諾 | | | | | | | | 保証債務残高 | | | | 代位弁済 | | | |
|----------|------|-----------|-------|-------|------------|-------|-------|-------|-------------|-------|-------|-----|---------|-------|------|--|
| | 当月中 | | | 当期中 | | | | 当期中 | | | | 当期中 | | | | |
| | 件数 | 金額 | 前年比 | 件数 | 金額 | 構成比 | 前年比 | 件数 | 金額 | 構成比 | 前年比 | 件数 | 金額 | 構成比 | 前年比 | |
| みずほ銀行 | 0 | 0 | 0.0 | 0 | 0 | 0.0 | 0.0 | 2 | 49,055 | 0.0 | 70.9 | 0 | 0 | 0.0 | 0.0 | |
| 三菱UFJ銀行 | 0 | 0 | 0.0 | 0 | 0 | 0.0 | 0.0 | 24 | 276,780 | 0.2 | 84.3 | 0 | 0 | 0.0 | 0.0 | |
| 三井住友銀行 | 0 | 0 | 0.0 | 0 | 0 | 0.0 | 0.0 | 0 | 0 | 0.0 | 0.0 | 0 | 0 | 0.0 | 0.0 | |
| 小計 | 0 | 0 | 0.0 | 0 | 0 | 0.0 | 0.0 | 26 | 325,835 | 0.3 | 78.9 | 0 | 0 | 0.0 | 0.0 | |
| 十六銀行 | 33 | 689,500 | 116.1 | 417 | 8,959,082 | 33.2 | 136.8 | 3,004 | 44,160,039 | 34.0 | 99.3 | 6 | 36,102 | 9.7 | 38.5 | |
| 大垣共立銀行 | 20 | 557,498 | 119.4 | 180 | 4,296,665 | 15.9 | 125.2 | 1,291 | 20,714,376 | 15.9 | 98.8 | 4 | 44,075 | 11.8 | 47.8 | |
| 北陸銀行 | 1 | 50,000 | 0.0 | 4 | 113,000 | 0.4 | 62.8 | 27 | 591,179 | 0.5 | 97.9 | 0 | 0 | 0.0 | 0.0 | |
| 三十三銀行 | 0 | 0 | 0.0 | 0 | 0 | 0.0 | 0.0 | 9 | 70,918 | 0.1 | 82.0 | 0 | 0 | 0.0 | 0.0 | |
| 小計 | 54 | 1,296,998 | 122.2 | 601 | 13,368,747 | 49.6 | 131.6 | 4,331 | 65,536,512 | 50.4 | 99.1 | 10 | 80,177 | 21.5 | 43.1 | |
| 愛知銀行 | 1 | 40,000 | 0.0 | 3 | 60,000 | 0.2 | 96.8 | 37 | 516,888 | 0.4 | 99.2 | 0 | 0 | 0.0 | 0.0 | |
| 名古屋銀行 | 0 | 0 | 0.0 | 8 | 189,000 | 0.7 | 295.3 | 54 | 1,001,007 | 0.8 | 115.9 | 0 | 0 | 0.0 | 0.0 | |
| 中京銀行 | 0 | 0 | 0.0 | 0 | 0 | 0.0 | 0.0 | 1 | 3,800 | 0.0 | 43.2 | 0 | 0 | 0.0 | 0.0 | |
| 小計 | 1 | 40,000 | 0.0 | 11 | 249,000 | 0.9 | 197.6 | 92 | 1,521,695 | 1.2 | 109.2 | 0 | 0 | 0.0 | 0.0 | |
| 岐阜信用金庫 | 57 | 1,108,400 | 101.3 | 665 | 12,134,801 | 45.0 | 91.3 | 3,950 | 56,307,031 | 43.3 | 94.7 | 17 | 169,167 | 45.3 | 45.0 | |
| 大垣西濃信用金庫 | 1 | 18,000 | 171.4 | 34 | 249,399 | 0.9 | 80.3 | 212 | 1,821,217 | 1.4 | 92.0 | 0 | 0 | 0.0 | 0.0 | |
| 関信用金庫 | 0 | 0 | 0.0 | 7 | 42,000 | 0.2 | 76.4 | 83 | 513,920 | 0.4 | 92.4 | 0 | 0 | 0.0 | 0.0 | |
| 小計 | 58 | 1,126,400 | 102.0 | 706 | 12,426,200 | 46.1 | 90.9 | 4,245 | 58,642,168 | 45.1 | 94.6 | 17 | 169,167 | 45.3 | 45.0 | |
| 商工組合中央金庫 | 0 | 0 | 0.0 | 1 | 40,000 | 0.1 | 62.5 | 8 | 115,909 | 0.1 | 72.0 | 0 | 0 | 0.0 | 0.0 | |
| 日本政策金融公庫 | 0 | 0 | 0.0 | 0 | 0 | 0.0 | 0.0 | 0 | 0 | 0.0 | 0.0 | 0 | 0 | 0.0 | 0.0 | |
| 小計 | 0 | 0 | 0.0 | 1 | 40,000 | 0.1 | 62.5 | 8 | 115,909 | 0.1 | 72.0 | 0 | 0 | 0.0 | 0.0 | |
| 岐阜商工信用組合 | 6 | 85,200 | 87.4 | 94 | 857,387 | 3.2 | 115.3 | 616 | 3,827,780 | 2.9 | 95.4 | 14 | 124,024 | 33.2 | 95.7 | |
| 小計 | 6 | 85,200 | 87.4 | 94 | 857,387 | 3.2 | 115.3 | 616 | 3,827,780 | 2.9 | 95.4 | 14 | 124,024 | 33.2 | 95.7 | |
| ぎふ農業協同組合 | 0 | 0 | 0.0 | 2 | 6,700 | 0.0 | 0.0 | 15 | 75,766 | 0.1 | 100.5 | 0 | 0 | 0.0 | 0.0 | |
| 小計 | 0 | 0 | 0.0 | 2 | 6,700 | 0.0 | 0.0 | 15 | 75,766 | 0.1 | 100.5 | 0 | 0 | 0.0 | 0.0 | |
| 合計 | 119 | 2,548,598 | 112.6 | 1,415 | 26,948,034 | 100.0 | 108.8 | 9,333 | 130,045,664 | 100.0 | 96.9 | 41 | 373,368 | 100.0 | 54.0 | |

○制度別保証状況【令和5年1月】

(単位:千円、%)

| 区分 | 保証承諾 | | | | | | | 保証債務残高 | | | | 代位弁済 | | | |
|------------------|------|-----------|-------|-------|------------|-------|-------|--------|-------------|-------|-------|------|---------|-------|-------|
| | 当月中 | | | 当期中 | | | | 当期中 | | | | 当期中 | | | |
| | 件数 | 金額 | 前年比 | 件数 | 金額 | 構成比 | 前年比 | 件数 | 金額 | 構成比 | 前年比 | 件数 | 金額 | 構成比 | 前年比 |
| 協会制度 | 24 | 501,500 | 100.3 | 365 | 7,232,702 | 26.8 | 135.4 | 1,581 | 22,624,528 | 17.4 | 101.6 | 10 | 113,457 | 30.4 | 30.3 |
| 普通保証 | 1 | 60,000 | 75.0 | 23 | 665,300 | 2.5 | 86.9 | 200 | 3,377,147 | 2.6 | 80.3 | 0 | 0 | 0.0 | 0.0 |
| 無担保保証 | 10 | 151,000 | 83.3 | 139 | 1,800,320 | 6.7 | 139.2 | 643 | 4,649,051 | 3.6 | 95.2 | 6 | 37,781 | 10.1 | 113.2 |
| 当座貸越根保証 | 2 | 25,000 | 35.7 | 50 | 890,000 | 3.3 | 117.9 | 114 | 2,164,374 | 1.7 | 101.0 | 0 | 0 | 0.0 | 0.0 |
| 無担保当座貸越根保証 | 0 | 0 | 0.0 | 0 | 0 | 0.0 | 0.0 | 1 | 6,424 | 0.0 | 86.4 | 0 | 0 | 0.0 | 0.0 |
| 事業者カードローン当座貸越根保証 | 3 | 31,500 | 165.8 | 45 | 282,500 | 1.0 | 110.7 | 132 | 781,190 | 0.6 | 93.8 | 0 | 0 | 0.0 | 0.0 |
| 長期経営資金保証 | 0 | 0 | 0.0 | 0 | 0 | 0.0 | 0.0 | 8 | 137,857 | 0.1 | 55.8 | 0 | 0 | 0.0 | 0.0 |
| 中小企業特定社債保証 | 1 | 40,000 | 125.0 | 3 | 160,000 | 0.6 | 35.1 | 30 | 1,030,160 | 0.8 | 93.7 | 0 | 0 | 0.0 | 0.0 |
| 経営安定関連保証 | 0 | 0 | 0.0 | 2 | 95,000 | 0.4 | 118.8 | 55 | 849,474 | 0.7 | 93.8 | 1 | 2,776 | 0.7 | 12.2 |
| 経営革新関連保証 | 0 | 0 | 0.0 | 0 | 0 | 0.0 | 0.0 | 0 | 0 | 0.0 | 0.0 | 0 | 0 | 0.0 | 0.0 |
| 小口零細企業保証 | 0 | 0 | 0.0 | 2 | 5,000 | 0.0 | 166.7 | 14 | 29,792 | 0.0 | 95.1 | 0 | 0 | 0.0 | 0.0 |
| 東日本大震災復興緊急保証 | 0 | 0 | 0.0 | 0 | 0 | 0.0 | 0.0 | 6 | 181,883 | 0.1 | 99.8 | 0 | 0 | 0.0 | 0.0 |
| 経営力強化保証 | 1 | 10,000 | 0.0 | 12 | 444,430 | 1.6 | 233.4 | 29 | 706,195 | 0.5 | 114.4 | 1 | 17,749 | 4.8 | 115.2 |
| 経営者保証ガイドライン対応保証 | 0 | 0 | 0.0 | 0 | 0 | 0.0 | 0.0 | 0 | 0 | 0.0 | 0.0 | 0 | 0 | 0.0 | 0.0 |
| 事業再生保証 | 0 | 0 | 0.0 | 2 | 20,642 | 0.1 | 21.3 | 17 | 240,945 | 0.2 | 105.0 | 0 | 0 | 0.0 | 0.0 |
| アシスト450 | 0 | 0 | 0.0 | 0 | 0 | 0.0 | 0.0 | 3 | 44,155 | 0.0 | 95.4 | 0 | 0 | 0.0 | 0.0 |
| 税理士連携 | 0 | 0 | 0.0 | 5 | 133,000 | 0.5 | 100.0 | 5 | 133,000 | 0.1 | 100.0 | 0 | 0 | 0.0 | 0.0 |
| NEO | 4 | 104,000 | 189.1 | 36 | 1,472,000 | 5.5 | 207.1 | 128 | 4,258,045 | 3.3 | 122.4 | 1 | 37,793 | 10.1 | 0.0 |
| 危機関連 | 0 | 0 | 0.0 | 0 | 0 | 0.0 | 0.0 | 0 | 0 | 0.0 | 0.0 | 0 | 0 | 0.0 | 0.0 |
| 事業承継特別 | 0 | 0 | 0.0 | 0 | 0 | 0.0 | 0.0 | 16 | 858,900 | 0.7 | 68.1 | 0 | 0 | 0.0 | 0.0 |
| 伴走支援型特別 | 2 | 80,000 | 0.0 | 44 | 1,204,510 | 4.5 | 751.4 | 56 | 1,463,963 | 1.1 | 992.3 | 0 | 0 | 0.0 | 0.0 |
| その他 | 0 | 0 | 0.0 | 2 | 60,000 | 0.2 | 95.5 | 124 | 1,711,975 | 1.3 | 94.1 | 1 | 17,360 | 4.6 | 67.9 |
| 岐阜市制度 | 95 | 2,047,098 | 116.1 | 1,050 | 19,715,332 | 73.2 | 101.5 | 7,752 | 107,421,136 | 82.6 | 96.0 | 31 | 259,911 | 69.6 | 81.9 |
| 中小企業振興資金 | 4 | 38,700 | 218.6 | 31 | 276,400 | 1.0 | 190.5 | 217 | 894,655 | 0.7 | 96.7 | 3 | 8,432 | 2.3 | 29.8 |
| 経営環境変動対策資金 | 10 | 268,000 | 454.2 | 117 | 1,944,025 | 7.2 | 198.6 | 745 | 8,408,425 | 6.5 | 90.3 | 3 | 22,691 | 6.1 | 14.5 |
| ぎふしアシスト短期資金 | 43 | 1,197,900 | 101.4 | 335 | 9,569,900 | 35.5 | 98.2 | 388 | 10,843,516 | 8.3 | 97.8 | 1 | 12,935 | 3.5 | 25.8 |
| 創業者支援資金 | 1 | 3,000 | 14.7 | 21 | 141,600 | 0.5 | 63.5 | 141 | 566,334 | 0.4 | 110.3 | 3 | 13,324 | 3.6 | 395.6 |
| ぎふしDX促進資金 | 0 | 0 | 0.0 | 1 | 700 | 0.0 | 0.0 | 1 | 642 | 0.0 | 0.0 | 0 | 0 | 0.0 | 0.0 |
| みらい戦略資金 | 0 | 0 | 0.0 | 1 | 10,000 | 0.0 | 65.4 | 14 | 97,751 | 0.1 | 168.6 | 0 | 0 | 0.0 | 0.0 |
| 雇用促進資金 | 0 | 0 | 0.0 | 2 | 32,500 | 0.1 | 0.0 | 37 | 235,756 | 0.2 | 69.7 | 1 | 14,817 | 4.0 | 0.0 |
| ぎふし返済おまとめ資金 | 0 | 0 | 0.0 | 0 | 0 | 0.0 | 0.0 | 4 | 56,303 | 0.0 | 71.0 | 0 | 0 | 0.0 | 0.0 |
| 小口零細企業資金 | 12 | 49,800 | 76.7 | 235 | 1,078,428 | 4.0 | 139.4 | 1,146 | 2,917,089 | 2.2 | 102.0 | 4 | 9,005 | 2.4 | 200.0 |
| 短期資金 | 0 | 0 | 0.0 | 48 | 492,000 | 1.8 | 100.5 | 49 | 534,142 | 0.4 | 100.7 | 0 | 0 | 0.0 | 0.0 |
| ぎふし経営力強化資金 | 16 | 290,498 | 88.3 | 130 | 3,416,961 | 12.7 | 172.0 | 550 | 8,641,819 | 6.6 | 101.2 | 2 | 21,747 | 5.8 | 86.9 |
| 事業所建設等促進資金 | 0 | 0 | 0.0 | 4 | 150,700 | 0.6 | 251.2 | 57 | 1,158,859 | 0.9 | 101.8 | 1 | 13,585 | 3.6 | 0.0 |
| ぎふし事業承継資金 | 0 | 0 | 0.0 | 0 | 0 | 0.0 | 0.0 | 2 | 15,593 | 0.0 | 87.7 | 0 | 0 | 0.0 | 0.0 |
| ぎふし事業承継特別 | 0 | 0 | 0.0 | 5 | 255,780 | 0.9 | 37.7 | 64 | 3,096,238 | 2.4 | 93.9 | 0 | 0 | 0.0 | 0.0 |
| ぎふし危機関連資金 | 0 | 0 | 0.0 | 0 | 0 | 0.0 | 0.0 | 147 | 5,490,033 | 4.2 | 86.6 | 0 | 0 | 0.0 | 0.0 |
| ぎふし新型コロナ対応資金 | 0 | 0 | 0.0 | 0 | 0 | 0.0 | 0.0 | 3,912 | 60,364,820 | 46.4 | 92.5 | 13 | 143,376 | 38.4 | 426.0 |
| ぎふし伴走支援型特別 | 9 | 199,200 | 253.8 | 120 | 2,346,338 | 8.7 | 173.3 | 240 | 3,846,705 | 3.0 | 294.9 | 0 | 0 | 0.0 | 0.0 |
| その他 | 0 | 0 | 0.0 | 0 | 0 | 0.0 | 0.0 | 38 | 252,456 | 0.2 | 81.0 | 0 | 0 | 0.0 | 0.0 |
| 合計 | 119 | 2,548,598 | 112.6 | 1,415 | 26,948,034 | 100.0 | 108.8 | 9,333 | 130,045,664 | 100.0 | 96.9 | 41 | 373,368 | 100.0 | 54.0 |