

○事業概況【令和4年6月】

(単位:千円、%)

| 当月中 | | 当月中 前年比 | 項目 | 当期中 | | 当月末 前年比 | |
|-----|-----------|------------|------------|--------|-------------|-------------|-------|
| 件数 | 金額 | | | 件数 | 金額 | | |
| / | / | / | 保証 申込 | 期首繰越 A | 17 | 298,272 | 8.8 |
| 150 | 2,508,142 | 125.3 | | 当期中 B | 422 | 7,342,206 | 142.9 |
| 0 | 0 | 0.0 | 拒絶 C | 0 | 0 | 0.0 | |
| 2 | 54,400 | 286.3 | 申込取消 D | 8 | 134,400 | 37.4 | |
| / | 30,000 | 731.7 | 査定減額 E | / | 32,100 | 25.1 | |
| / | / | / | 調査中 F | 6 | 49,300 | 18.7 | |
| / | / | / | 保証 承諾 | 期首繰越 G | 9,484 | 133,957,035 | 92.7 |
| 154 | 2,563,542 | 129.6 | | 当期中 H | 425 | 7,424,678 | 95.3 |
| 1 | 3,000 | 11.1 | 保証後取消 I | 1 | 3,000 | 4.5 | |
| 169 | 3,153,396 | 119.1 | 償還 J | 432 | 8,275,652 | 69.1 | |
| 0 | 0 | 0.0 | 代位弁済(元金) K | 2 | 6,283 | 2.0 | |
| / | / | / | 貸付報告未着 L | 72 | 1,313,618 | 137.6 | |
| / | / | / | 保証債務残高 M | 9,402 | 131,783,160 | 94.9 | |
| / | / | / | 期首求償権残高 N | 228 | 681,220 | 114.7 | |
| 0 | 0 | 0.0 | 代位 弁済 | 元金 | 2 | 6,283 | 2.0 |
| / | 0 | 0.0 | | 利息 | / | 4 | 1.0 |
| 0 | 0 | 0.0 | | 合計 O | 2 | 6,287 | 2.0 |
| 0 | 3,264 | 15.9 | 回収 P | 0 | 13,538 | 17.2 | |
| 0 | 0 | 0.0 | 償却 Q | 0 | 0 | 0.0 | |
| / | / | / | 求償権残高 R | 230 | 673,970 | 80.8 | |

A+B=C+D+E+F+H

G+H=I+J+K+L+M

N+O=P+Q+R

実績月別推移表

○保証承諾

(単位:千円、%)

| | 令和2年度 | | 令和3年度 | | 令和4年度 | | |
|-----|-------|-------------|-------|------------|-------|-----------|-------|
| | 件数 | 金額 | 件数 | 金額 | 件数 | 金額 | 前年比 |
| 4月 | 319 | 7,795,493 | 207 | 3,834,285 | 120 | 2,217,116 | 57.8 |
| 5月 | 812 | 17,517,866 | 114 | 1,977,890 | 151 | 2,644,020 | 133.7 |
| 6月 | 1,123 | 20,131,194 | 123 | 1,978,055 | 154 | 2,563,542 | 129.6 |
| 7月 | 679 | 12,117,786 | 102 | 1,770,931 | | | |
| 8月 | 476 | 8,671,744 | 106 | 2,249,900 | | | |
| 9月 | 314 | 5,772,455 | 133 | 2,221,200 | | | |
| 10月 | 248 | 3,992,188 | 108 | 2,058,751 | | | |
| 11月 | 239 | 4,171,429 | 124 | 2,775,904 | | | |
| 12月 | 349 | 5,970,515 | 166 | 3,627,830 | | | |
| 1月 | 186 | 3,140,048 | 112 | 2,263,148 | | | |
| 2月 | 293 | 5,662,876 | 109 | 1,896,900 | | | |
| 3月 | 830 | 20,713,269 | 146 | 2,580,010 | | | |
| 合計 | 5,868 | 115,656,863 | 1,550 | 29,234,804 | 425 | 7,424,678 | 95.3 |

○保証債務残高

(単位:千円、%)

| | 令和2年度 | | 令和3年度 | | 令和4年度 | | |
|-----|-------|-------------|-------|-------------|-------|-------------|------|
| | 件数 | 金額 | 件数 | 金額 | 件数 | 金額 | 前年比 |
| 4月 | 6,820 | 76,883,233 | 9,795 | 140,194,812 | 9,416 | 132,833,798 | 94.7 |
| 5月 | 7,186 | 86,644,724 | 9,772 | 139,761,556 | 9,404 | 132,179,302 | 94.6 |
| 6月 | 7,953 | 101,940,779 | 9,710 | 138,912,095 | 9,402 | 131,783,160 | 94.9 |
| 7月 | 8,499 | 113,134,567 | 9,668 | 138,349,055 | | | |
| 8月 | 8,789 | 118,151,057 | 9,618 | 137,191,990 | | | |
| 9月 | 8,998 | 122,182,658 | 9,579 | 136,464,484 | | | |
| 10月 | 9,088 | 123,885,126 | 9,559 | 135,714,529 | | | |
| 11月 | 9,166 | 125,224,716 | 9,526 | 135,092,822 | | | |
| 12月 | 9,301 | 127,239,928 | 9,517 | 134,820,198 | | | |
| 1月 | 9,373 | 127,498,202 | 9,483 | 134,162,337 | | | |
| 2月 | 9,429 | 128,113,229 | 9,478 | 133,555,549 | | | |
| 3月 | 9,629 | 135,054,447 | 9,434 | 133,112,075 | | | |

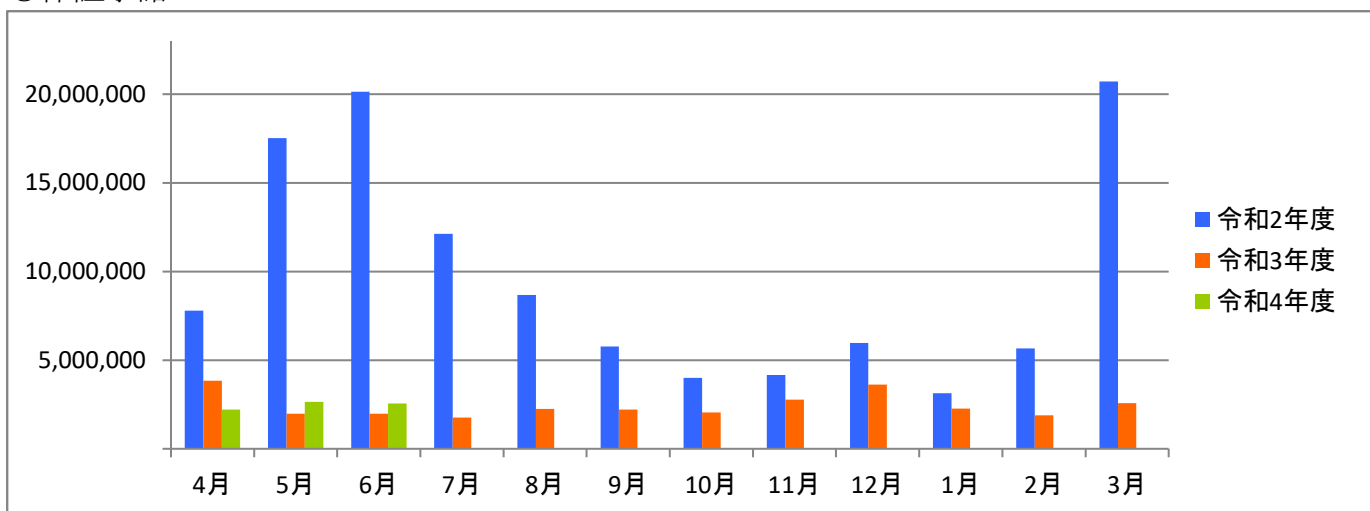
○代位弁済

(単位:千円、%)

| | 令和2年度 | | 令和3年度 | | 令和4年度 | | |
|-----|-------|---------|-------|---------|-------|-------|------|
| | 件数 | 金額 | 件数 | 金額 | 件数 | 金額 | 前年比 |
| 4月 | 5 | 8,138 | 6 | 274,062 | 0 | 0 | 0.0 |
| 5月 | 2 | 34,931 | 2 | 20,600 | 2 | 6,287 | 30.5 |
| 6月 | 6 | 51,531 | 3 | 24,517 | 0 | 0 | 0.0 |
| 7月 | 3 | 8,140 | 4 | 83,235 | | | |
| 8月 | 0 | 0 | 6 | 23,274 | | | |
| 9月 | 3 | 77,539 | 4 | 14,149 | | | |
| 10月 | 3 | 27,600 | 4 | 44,681 | | | |
| 11月 | 3 | 4,111 | 2 | 55,004 | | | |
| 12月 | 1 | 103 | 7 | 37,514 | | | |
| 1月 | 3 | 18,180 | 11 | 114,503 | | | |
| 2月 | 0 | 0 | 0 | 0 | | | |
| 3月 | 5 | 116,978 | 11 | 88,537 | | | |
| 合計 | 34 | 347,251 | 60 | 780,077 | 2 | 6,287 | 2.0 |

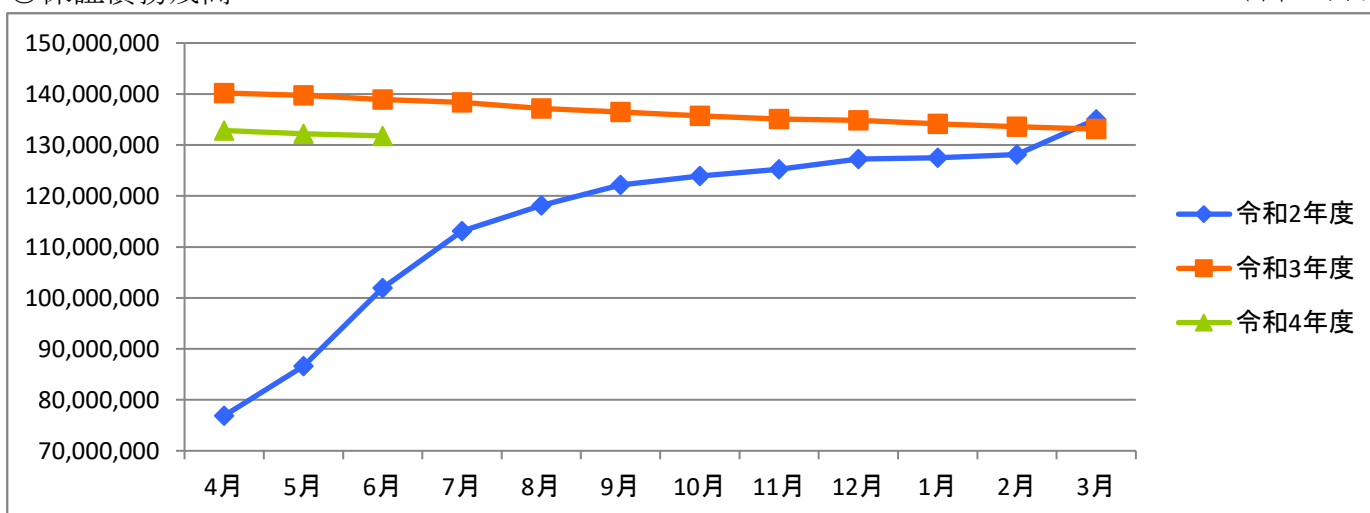
○保証承諾

(単位:千円)



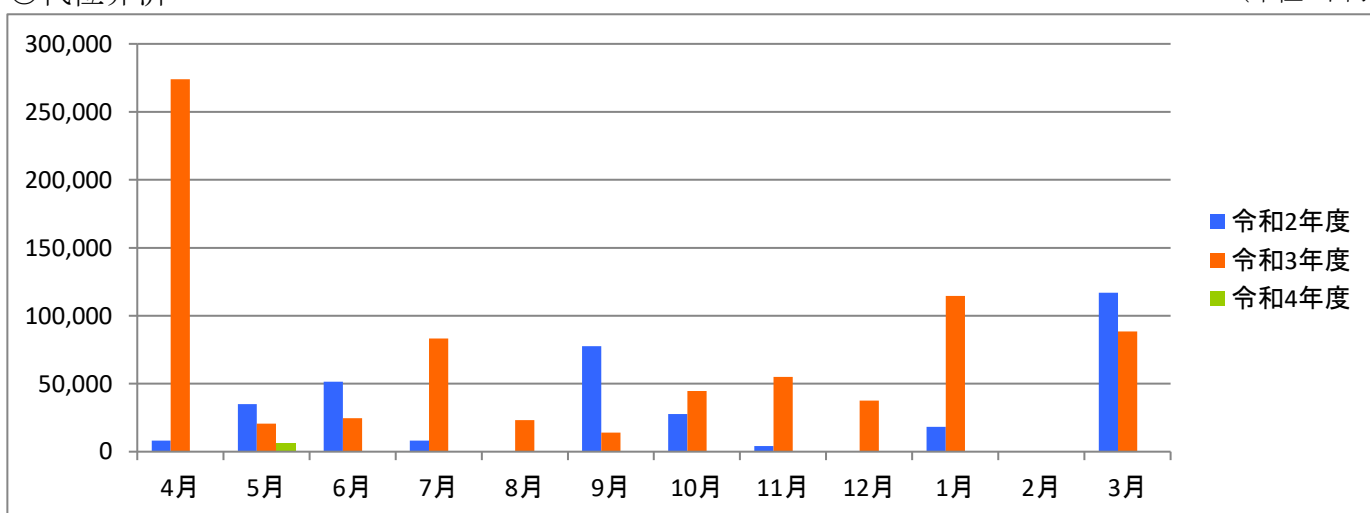
○保証債務残高

(単位:千円)



○代位弁済

(単位:千円)



資金使途別・金額別・期間別保証状況

○資金使途別保証状況【令和4年6月】

(単位:千円、%)

| 区分 | 保証承諾 | | | | | | | | 保証債務残高 | | | | 代位弁済 | | | |
|--------|------|-----------|-------|-----|-----------|-------|-------|-------|-------------|-------|------|-----|-------|-------|-----|--|
| | 当月中 | | | 当期中 | | | | 当期中 | | | | 当期中 | | | | |
| | 件数 | 金額 | 前年比 | 件数 | 金額 | 構成比 | 前年比 | 件数 | 金額 | 構成比 | 前年比 | 件数 | 金額 | 構成比 | 前年比 | |
| 運転資金 | 127 | 2,342,162 | 132.0 | 346 | 6,509,048 | 87.7 | 89.2 | 8,101 | 122,475,363 | 92.9 | 94.9 | 2 | 6,287 | 100.0 | 2.0 | |
| 設備資金 | 11 | 60,680 | 65.3 | 34 | 292,430 | 3.9 | 125.7 | 591 | 3,508,023 | 2.7 | 96.0 | 0 | 0 | 0.0 | 0.0 | |
| 運転設備資金 | 16 | 160,700 | 145.6 | 45 | 623,200 | 8.4 | 240.0 | 710 | 5,799,773 | 4.4 | 93.8 | 0 | 0 | 0.0 | 0.0 | |
| 合計 | 154 | 2,563,542 | 129.6 | 425 | 7,424,678 | 100.0 | 95.3 | 9,402 | 131,783,160 | 100.0 | 94.9 | 2 | 6,287 | 100.0 | 2.0 | |

○金額別保証状況【令和4年6月】

(単位:千円、%)

| 区分 | 保証承諾 | | | | | | | | 保証債務残高 | | | | 代位弁済 | | | |
|-----------|------|-----------|-------|-----|-----------|-------|-------|-------|-------------|-------|------|-----|-------|-------|------|--|
| | 当月中 | | | 当期中 | | | | 当期中 | | | | 当期中 | | | | |
| | 件数 | 金額 | 前年比 | 件数 | 金額 | 構成比 | 前年比 | 件数 | 金額 | 構成比 | 前年比 | 件数 | 金額 | 構成比 | 前年比 | |
| 100万円以下 | 3 | 2,800 | 58.3 | 9 | 8,300 | 0.1 | 51.1 | 261 | 146,064 | 0.1 | 85.7 | 0 | 0 | 0.0 | 0.0 | |
| 200万円以下 | 8 | 14,500 | 100.0 | 28 | 52,200 | 0.7 | 99.2 | 557 | 633,543 | 0.5 | 89.5 | 0 | 0 | 0.0 | 0.0 | |
| 300万円以下 | 10 | 27,580 | 97.1 | 35 | 99,830 | 1.3 | 112.3 | 696 | 1,262,710 | 1.0 | 91.9 | 0 | 0 | 0.0 | 0.0 | |
| 500万円以下 | 25 | 117,518 | 104.6 | 59 | 276,718 | 3.7 | 85.6 | 1,196 | 3,711,912 | 2.8 | 92.0 | 2 | 6,287 | 100.0 | 77.3 | |
| 1,000万円以下 | 39 | 347,400 | 130.5 | 94 | 839,094 | 11.3 | 95.1 | 2,183 | 14,254,095 | 10.8 | 93.2 | 0 | 0 | 0.0 | 0.0 | |
| 1,500万円以下 | 14 | 192,744 | 169.1 | 44 | 609,792 | 8.2 | 150.9 | 756 | 7,512,366 | 5.7 | 95.4 | 0 | 0 | 0.0 | 0.0 | |
| 2,000万円以下 | 22 | 433,000 | 245.0 | 47 | 920,480 | 12.4 | 86.5 | 1,186 | 18,543,091 | 14.1 | 93.9 | 0 | 0 | 0.0 | 0.0 | |
| 3,000万円以下 | 11 | 307,000 | 103.4 | 41 | 1,138,264 | 15.3 | 103.6 | 1,173 | 27,184,496 | 20.6 | 95.5 | 0 | 0 | 0.0 | 0.0 | |
| 5,000万円以下 | 16 | 721,000 | 155.7 | 54 | 2,427,000 | 32.7 | 116.1 | 952 | 33,606,279 | 25.5 | 98.2 | 0 | 0 | 0.0 | 0.0 | |
| 6,000万円以下 | 4 | 235,000 | 419.6 | 7 | 405,000 | 5.5 | 45.3 | 199 | 10,496,806 | 8.0 | 97.1 | 0 | 0 | 0.0 | 0.0 | |
| 7,000万円以下 | 1 | 65,000 | 92.9 | 4 | 268,000 | 3.6 | 191.4 | 65 | 2,859,015 | 2.2 | 93.9 | 0 | 0 | 0.0 | 0.0 | |
| 8,000万円以下 | 0 | 0 | 0.0 | 1 | 80,000 | 1.1 | 25.2 | 117 | 6,904,803 | 5.2 | 90.8 | 0 | 0 | 0.0 | 0.0 | |
| 1億円以下 | 1 | 100,000 | 105.3 | 1 | 100,000 | 1.3 | 105.3 | 20 | 1,070,413 | 0.8 | 75.4 | 0 | 0 | 0.0 | 0.0 | |
| 2億円以下 | 0 | 0 | 0.0 | 1 | 200,000 | 2.7 | 61.9 | 41 | 3,597,566 | 2.7 | 87.2 | 0 | 0 | 0.0 | 0.0 | |
| 3億円以下 | 0 | 0 | 0.0 | 0 | 0 | 0.0 | 0.0 | 0 | 0 | 0.0 | 0.0 | 0 | 0 | 0.0 | 0.0 | |
| 4億円以下 | 0 | 0 | 0.0 | 0 | 0 | 0.0 | 0.0 | 0 | 0 | 0.0 | 0.0 | 0 | 0 | 0.0 | 0.0 | |
| 5億円以下 | 0 | 0 | 0.0 | 0 | 0 | 0.0 | 0.0 | 0 | 0 | 0.0 | 0.0 | 0 | 0 | 0.0 | 0.0 | |
| 5億円超 | 0 | 0 | 0.0 | 0 | 0 | 0.0 | 0.0 | 0 | 0 | 0.0 | 0.0 | 0 | 0 | 0.0 | 0.0 | |
| 合計 | 154 | 2,563,542 | 129.6 | 425 | 7,424,678 | 100.0 | 95.3 | 9,402 | 131,783,160 | 100.0 | 94.9 | 2 | 6,287 | 100.0 | 2.0 | |

○期間別保証状況【令和4年6月】

(単位:千円、%)

| 区分 | 保証承諾 | | | | | | | | 保証債務残高 | | | | 代位弁済 | | | |
|-------|------|-----------|---------|-----|-----------|-------|-------|-------|-------------|-------|-------|-----|-------|-------|------|--|
| | 当月中 | | | 当期中 | | | | 当期中 | | | | 当期中 | | | | |
| | 件数 | 金額 | 前年比 | 件数 | 金額 | 構成比 | 前年比 | 件数 | 金額 | 構成比 | 前年比 | 件数 | 金額 | 構成比 | 前年比 | |
| 3カ月以下 | 1 | 10,000 | 0.0 | 2 | 12,000 | 0.2 | 0.0 | 2 | 62,746 | 0.0 | 348.6 | 0 | 0 | 0.0 | 0.0 | |
| 6カ月以下 | 5 | 101,300 | 2,026.0 | 11 | 189,300 | 2.5 | 201.4 | 22 | 237,281 | 0.2 | 122.7 | 0 | 0 | 0.0 | 0.0 | |
| 1年以下 | 41 | 853,700 | 96.3 | 121 | 2,749,274 | 37.0 | 95.1 | 540 | 13,647,675 | 10.4 | 93.4 | 0 | 0 | 0.0 | 0.0 | |
| 2年以下 | 9 | 85,000 | 184.8 | 30 | 459,500 | 6.2 | 301.3 | 276 | 3,064,394 | 2.3 | 93.7 | 0 | 0 | 0.0 | 0.0 | |
| 3年以下 | 3 | 16,300 | 74.8 | 10 | 44,750 | 0.6 | 12.5 | 536 | 5,737,499 | 4.4 | 79.7 | 0 | 0 | 0.0 | 0.0 | |
| 4年以下 | 2 | 4,380 | 0.0 | 4 | 16,380 | 0.2 | 68.3 | 89 | 414,676 | 0.3 | 77.3 | 0 | 0 | 0.0 | 0.0 | |
| 5年以下 | 27 | 204,000 | 124.2 | 69 | 471,300 | 6.3 | 130.4 | 1,296 | 7,033,854 | 5.3 | 95.7 | 0 | 0 | 0.0 | 0.0 | |
| 7年以下 | 37 | 505,242 | 275.3 | 96 | 1,156,342 | 15.6 | 214.1 | 2,460 | 20,881,488 | 15.8 | 88.0 | 1 | 2,284 | 36.3 | 21.4 | |
| 10年以下 | 28 | 767,620 | 136.2 | 79 | 2,289,190 | 30.8 | 71.9 | 3,991 | 75,885,300 | 57.6 | 98.7 | 1 | 4,003 | 63.7 | 4.0 | |
| 10年超 | 1 | 16,000 | 15.0 | 3 | 36,642 | 0.5 | 19.8 | 190 | 4,818,248 | 3.7 | 93.6 | 0 | 0 | 0.0 | 0.0 | |
| 合計 | 154 | 2,563,542 | 129.6 | 425 | 7,424,678 | 100.0 | 95.3 | 9,402 | 131,783,160 | 100.0 | 94.9 | 2 | 6,287 | 100.0 | 2.0 | |

○業種別保証状況【令和4年6月】

(単位:千円、%)

| 区分 | 保証承諾 | | | | | | | | 保証債務残高 | | | | 代位弁済 | | | |
|-------------|------|-----------|---------|-----|-----------|-------|-------|-------|-------------|-------|-------|-----|-------|-------|------|--|
| | 当月中 | | | 当期中 | | | | 当期中 | | | | 当期中 | | | | |
| | 件数 | 金額 | 前年比 | 件数 | 金額 | 構成比 | 前年比 | 件数 | 金額 | 構成比 | 前年比 | 件数 | 金額 | 構成比 | 前年比 | |
| 製造業 | 21 | 240,624 | 75.5 | 63 | 1,303,896 | 17.6 | 88.5 | 1,476 | 21,748,481 | 16.5 | 93.4 | 0 | 0 | 0.0 | 0.0 | |
| 食品工業 | 2 | 15,000 | 15.0 | 11 | 408,642 | 5.5 | 162.8 | 136 | 2,698,348 | 2.0 | 99.6 | 0 | 0 | 0.0 | 0.0 | |
| 繊維品工業 | 8 | 90,200 | 134.6 | 15 | 215,200 | 2.9 | 49.6 | 322 | 4,033,613 | 3.1 | 97.5 | 0 | 0 | 0.0 | 0.0 | |
| 木材・木製品工業 | 0 | 0 | 0.0 | 0 | 0 | 0.0 | 0.0 | 29 | 372,347 | 0.3 | 98.5 | 0 | 0 | 0.0 | 0.0 | |
| 家具・建具工業 | 2 | 43,000 | 0.0 | 2 | 43,000 | 0.6 | 860.0 | 62 | 748,784 | 0.6 | 85.9 | 0 | 0 | 0.0 | 0.0 | |
| 紙工業 | 0 | 0 | 0.0 | 1 | 10,000 | 0.1 | 6.3 | 48 | 974,143 | 0.7 | 93.1 | 0 | 0 | 0.0 | 0.0 | |
| 印刷・製本業 | 1 | 11,744 | 17.8 | 7 | 75,244 | 1.0 | 62.9 | 152 | 2,277,547 | 1.7 | 93.3 | 0 | 0 | 0.0 | 0.0 | |
| 化学工業 | 0 | 0 | 0.0 | 1 | 50,000 | 0.7 | 227.3 | 19 | 341,244 | 0.3 | 89.9 | 0 | 0 | 0.0 | 0.0 | |
| 石油・石炭製品工業 | 0 | 0 | 0.0 | 0 | 0 | 0.0 | 0.0 | 0 | 0 | 0.0 | 0.0 | 0 | 0 | 0.0 | 0.0 | |
| ゴム・プラスチック工業 | 3 | 27,180 | 0.0 | 4 | 35,680 | 0.5 | 548.9 | 69 | 976,188 | 0.7 | 94.0 | 0 | 0 | 0.0 | 0.0 | |
| ゴム製品製造業 | 0 | 0 | 0.0 | 0 | 0 | 0.0 | 0.0 | 5 | 57,868 | 0.0 | 97.6 | 0 | 0 | 0.0 | 0.0 | |
| 皮革工業 | 0 | 0 | 0.0 | 0 | 0 | 0.0 | 0.0 | 0 | 0 | 0.0 | 0.0 | 0 | 0 | 0.0 | 0.0 | |
| 窯業 | 0 | 0 | 0.0 | 2 | 85,000 | 1.1 | 425.0 | 21 | 454,818 | 0.3 | 110.1 | 0 | 0 | 0.0 | 0.0 | |
| 機械工業 | 2 | 19,500 | 0.0 | 7 | 182,130 | 2.5 | 153.5 | 124 | 2,389,459 | 1.8 | 92.2 | 0 | 0 | 0.0 | 0.0 | |
| 電気機器工業 | 0 | 0 | 0.0 | 0 | 0 | 0.0 | 0.0 | 26 | 408,470 | 0.3 | 87.0 | 0 | 0 | 0.0 | 0.0 | |
| 車輛工業 | 0 | 0 | 0.0 | 0 | 0 | 0.0 | 0.0 | 26 | 306,806 | 0.2 | 88.2 | 0 | 0 | 0.0 | 0.0 | |
| 船舶工業 | 0 | 0 | 0.0 | 0 | 0 | 0.0 | 0.0 | 0 | 0 | 0.0 | 0.0 | 0 | 0 | 0.0 | 0.0 | |
| 金属工業 | 0 | 0 | 0.0 | 2 | 45,000 | 0.6 | 346.2 | 138 | 2,607,505 | 2.0 | 94.7 | 0 | 0 | 0.0 | 0.0 | |
| ソフトウェア業 | 0 | 0 | 0.0 | 3 | 95,000 | 1.3 | 139.7 | 58 | 853,515 | 0.6 | 77.7 | 0 | 0 | 0.0 | 0.0 | |
| 情報処理サービス業 | 0 | 0 | 0.0 | 0 | 0 | 0.0 | 0.0 | 2 | 10,250 | 0.0 | 94.5 | 0 | 0 | 0.0 | 0.0 | |
| その他の工業 | 3 | 34,000 | 61.3 | 8 | 59,000 | 0.8 | 38.1 | 239 | 2,237,577 | 1.7 | 88.3 | 0 | 0 | 0.0 | 0.0 | |
| 農林漁業 | 0 | 0 | 0.0 | 0 | 0 | 0.0 | 0.0 | 3 | 10,186 | 0.0 | 57.6 | 0 | 0 | 0.0 | 0.0 | |
| 鉱業 | 0 | 0 | 0.0 | 0 | 0 | 0.0 | 0.0 | 4 | 97,325 | 0.1 | 81.5 | 0 | 0 | 0.0 | 0.0 | |
| 建設業 | 43 | 820,598 | 107.3 | 119 | 2,077,988 | 28.0 | 102.4 | 2,391 | 33,152,878 | 25.2 | 95.0 | 2 | 6,287 | 100.0 | 27.2 | |
| 卸売業 | 27 | 606,800 | 308.2 | 72 | 1,814,800 | 24.4 | 118.4 | 1,530 | 28,532,268 | 21.7 | 95.1 | 0 | 0 | 0.0 | 0.0 | |
| 小売業 | 19 | 344,500 | 163.3 | 46 | 734,800 | 9.9 | 71.5 | 1,208 | 16,618,396 | 12.6 | 95.1 | 0 | 0 | 0.0 | 0.0 | |
| 飲食店 | 8 | 117,220 | 134.7 | 19 | 236,964 | 3.2 | 58.4 | 599 | 5,225,272 | 4.0 | 91.3 | 0 | 0 | 0.0 | 0.0 | |
| 運送倉庫業 | 1 | 50,000 | 5,000.0 | 13 | 254,000 | 3.4 | 186.8 | 165 | 3,324,175 | 2.5 | 103.7 | 0 | 0 | 0.0 | 0.0 | |
| サービス業 | 29 | 275,000 | 105.2 | 76 | 771,930 | 10.4 | 78.0 | 1,698 | 19,025,213 | 14.4 | 94.4 | 0 | 0 | 0.0 | 0.0 | |
| 不動産業 | 3 | 25,800 | 21.6 | 11 | 100,300 | 1.4 | 70.7 | 205 | 1,997,346 | 1.5 | 102.3 | 0 | 0 | 0.0 | 0.0 | |
| その他の産業 | 3 | 83,000 | 461.1 | 6 | 130,000 | 1.8 | 241.6 | 123 | 2,051,621 | 1.6 | 97.7 | 0 | 0 | 0.0 | 0.0 | |
| 合計 | 154 | 2,563,542 | 129.6 | 425 | 7,424,678 | 100.0 | 95.3 | 9,402 | 131,783,160 | 100.0 | 94.9 | 2 | 6,287 | 100.0 | 2.0 | |

○金融機関別保証状況【令和4年6月】

(単位:千円、%)

| 区分 | 保証承諾 | | | | | | | 保証債務残高 | | | | 代位弁済 | | | |
|----------|------|-----------|-------|-----|-----------|-------|-------|--------|-------------|-------|-------|------|-------|-------|-----|
| | 当月中 | | | 当期中 | | | | 当期中 | | | | 当期中 | | | |
| | 件数 | 金額 | 前年比 | 件数 | 金額 | 構成比 | 前年比 | 件数 | 金額 | 構成比 | 前年比 | 件数 | 金額 | 構成比 | 前年比 |
| みずほ銀行 | 0 | 0 | 0.0 | 0 | 0 | 0.0 | 0.0 | 3 | 59,763 | 0.0 | 72.6 | 0 | 0 | 0.0 | 0.0 |
| 三菱UFJ銀行 | 0 | 0 | 0.0 | 0 | 0 | 0.0 | 0.0 | 24 | 306,916 | 0.2 | 81.5 | 0 | 0 | 0.0 | 0.0 |
| 三井住友銀行 | 0 | 0 | 0.0 | 0 | 0 | 0.0 | 0.0 | 0 | 0 | 0.0 | 0.0 | 0 | 0 | 0.0 | 0.0 |
| 小計 | 0 | 0 | 0.0 | 0 | 0 | 0.0 | 0.0 | 27 | 366,678 | 0.3 | 76.6 | 0 | 0 | 0.0 | 0.0 |
| 十六銀行 | 61 | 1,297,000 | 247.7 | 138 | 2,769,612 | 37.3 | 129.2 | 3,025 | 44,143,902 | 33.5 | 94.6 | 0 | 0 | 0.0 | 0.0 |
| 大垣共立銀行 | 11 | 113,620 | 115.9 | 47 | 1,008,900 | 13.6 | 144.2 | 1,277 | 20,820,680 | 15.8 | 97.8 | 0 | 0 | 0.0 | 0.0 |
| 北陸銀行 | 0 | 0 | 0.0 | 1 | 3,000 | 0.0 | 0.0 | 26 | 631,298 | 0.5 | 126.8 | 0 | 0 | 0.0 | 0.0 |
| 三十三銀行 | 0 | 0 | 0.0 | 0 | 0 | 0.0 | 0.0 | 9 | 80,142 | 0.1 | 84.0 | 0 | 0 | 0.0 | 0.0 |
| 小計 | 72 | 1,410,620 | 226.9 | 186 | 3,781,512 | 50.9 | 132.9 | 4,337 | 65,676,023 | 49.8 | 95.8 | 0 | 0 | 0.0 | 0.0 |
| 愛知銀行 | 0 | 0 | 0.0 | 2 | 20,000 | 0.3 | 0.0 | 36 | 522,025 | 0.4 | 100.5 | 0 | 0 | 0.0 | 0.0 |
| 名古屋銀行 | 3 | 46,000 | 0.0 | 5 | 116,000 | 1.6 | 0.0 | 57 | 1,040,668 | 0.8 | 111.5 | 0 | 0 | 0.0 | 0.0 |
| 中京銀行 | 0 | 0 | 0.0 | 0 | 0 | 0.0 | 0.0 | 1 | 6,712 | 0.0 | 19.4 | 0 | 0 | 0.0 | 0.0 |
| 小計 | 3 | 46,000 | 0.0 | 7 | 136,000 | 1.8 | 0.0 | 94 | 1,569,405 | 1.2 | 105.5 | 0 | 0 | 0.0 | 0.0 |
| 岐阜信用金庫 | 69 | 1,055,422 | 92.2 | 191 | 3,185,166 | 42.9 | 70.8 | 3,996 | 57,538,146 | 43.7 | 94.0 | 0 | 0 | 0.0 | 0.0 |
| 大垣西濃信用金庫 | 5 | 27,900 | 65.6 | 12 | 73,900 | 1.0 | 58.7 | 205 | 1,897,047 | 1.4 | 91.1 | 0 | 0 | 0.0 | 0.0 |
| 関信用金庫 | 0 | 0 | 0.0 | 1 | 2,500 | 0.0 | 35.7 | 85 | 541,018 | 0.4 | 93.3 | 0 | 0 | 0.0 | 0.0 |
| 小計 | 74 | 1,083,322 | 91.3 | 204 | 3,261,566 | 43.9 | 70.4 | 4,286 | 59,976,212 | 45.5 | 93.9 | 0 | 0 | 0.0 | 0.0 |
| 商工組合中央金庫 | 0 | 0 | 0.0 | 0 | 0 | 0.0 | 0.0 | 11 | 153,286 | 0.1 | 86.1 | 0 | 0 | 0.0 | 0.0 |
| 日本政策金融公庫 | 0 | 0 | 0.0 | 0 | 0 | 0.0 | 0.0 | 0 | 0 | 0.0 | 0.0 | 0 | 0 | 0.0 | 0.0 |
| 小計 | 0 | 0 | 0.0 | 0 | 0 | 0.0 | 0.0 | 11 | 153,286 | 0.1 | 86.1 | 0 | 0 | 0.0 | 0.0 |
| 岐阜商工信用組合 | 5 | 23,600 | 13.9 | 28 | 245,600 | 3.3 | 78.3 | 634 | 3,968,255 | 3.0 | 93.5 | 2 | 6,287 | 100.0 | 0.0 |
| 小計 | 5 | 23,600 | 13.9 | 28 | 245,600 | 3.3 | 78.3 | 634 | 3,968,255 | 3.0 | 93.5 | 2 | 6,287 | 100.0 | 0.0 |
| ぎふ農業協同組合 | 0 | 0 | 0.0 | 0 | 0 | 0.0 | 0.0 | 13 | 73,301 | 0.1 | 86.5 | 0 | 0 | 0.0 | 0.0 |
| 小計 | 0 | 0 | 0.0 | 0 | 0 | 0.0 | 0.0 | 13 | 73,301 | 0.1 | 86.5 | 0 | 0 | 0.0 | 0.0 |
| 合計 | 154 | 2,563,542 | 129.6 | 425 | 7,424,678 | 100.0 | 95.3 | 9,402 | 131,783,160 | 100.0 | 94.9 | 2 | 6,287 | 100.0 | 2.0 |

○制度別保証状況【令和4年6月】

(単位:千円、%)

| 区分 | 保証承諾 | | | | | | | | 保証債務残高 | | | | 代位弁済 | | | |
|------------------|------|-----------|-------|-----|-----------|-------|-------|-------|-------------|-------|---------|----|-------|-------|------|--|
| | 当月中 | | | 当期中 | | | | | 当期中 | | | | 当期中 | | | |
| | 件数 | 金額 | 前年比 | 件数 | 金額 | 構成比 | 前年比 | 件数 | 金額 | 構成比 | 前年比 | 件数 | 金額 | 構成比 | 前年比 | |
| 協会制度 | 31 | 585,800 | 83.2 | 110 | 2,250,062 | 30.3 | 147.6 | 1,580 | 21,652,205 | 16.4 | 96.7 | 0 | 0 | 0.0 | 0.0 | |
| 普通保証 | 5 | 47,300 | 473.0 | 15 | 453,800 | 6.1 | 221.4 | 224 | 3,775,323 | 2.9 | 85.0 | 0 | 0 | 0.0 | 0.0 | |
| 無担保保証 | 8 | 140,500 | 64.1 | 40 | 546,400 | 7.4 | 194.8 | 664 | 4,706,661 | 3.6 | 92.1 | 0 | 0 | 0.0 | 0.0 | |
| 当座貸越根保証 | 4 | 65,000 | 216.7 | 18 | 398,000 | 5.4 | 375.5 | 120 | 2,247,788 | 1.7 | 93.2 | 0 | 0 | 0.0 | 0.0 | |
| 無担保当座貸越根保証 | 0 | 0 | 0.0 | 0 | 0 | 0.0 | 0.0 | 2 | 6,669 | 0.0 | 78.3 | 0 | 0 | 0.0 | 0.0 | |
| 事業者カードローン当座貸越根保証 | 4 | 28,000 | 311.1 | 11 | 69,500 | 0.9 | 121.9 | 133 | 788,911 | 0.6 | 88.8 | 0 | 0 | 0.0 | 0.0 | |
| 長期経営資金保証 | 0 | 0 | 0.0 | 0 | 0 | 0.0 | 0.0 | 10 | 195,888 | 0.1 | 59.8 | 0 | 0 | 0.0 | 0.0 | |
| 中小企業特定社債保証 | 0 | 0 | 0.0 | 0 | 0 | 0.0 | 0.0 | 30 | 1,012,640 | 0.8 | 107.2 | 0 | 0 | 0.0 | 0.0 | |
| 経営安定関連保証 | 0 | 0 | 0.0 | 1 | 15,000 | 0.2 | 0.0 | 57 | 886,043 | 0.7 | 87.2 | 0 | 0 | 0.0 | 0.0 | |
| 経営革新関連保証 | 0 | 0 | 0.0 | 0 | 0 | 0.0 | 0.0 | 0 | 0 | 0.0 | 0.0 | 0 | 0 | 0.0 | 0.0 | |
| 小口零細企業保証 | 1 | 2,000 | 0.0 | 1 | 2,000 | 0.0 | 0.0 | 13 | 32,605 | 0.0 | 92.4 | 0 | 0 | 0.0 | 0.0 | |
| 東日本大震災復興緊急保証 | 0 | 0 | 0.0 | 0 | 0 | 0.0 | 0.0 | 6 | 182,143 | 0.1 | 98.6 | 0 | 0 | 0.0 | 0.0 | |
| 経営力強化保証 | 0 | 0 | 0.0 | 3 | 125,430 | 1.7 | 86.2 | 25 | 588,125 | 0.4 | 93.5 | 0 | 0 | 0.0 | 0.0 | |
| 経営者保証ガイドライン対応保証 | 0 | 0 | 0.0 | 0 | 0 | 0.0 | 0.0 | 0 | 0 | 0.0 | 0.0 | 0 | 0 | 0.0 | 0.0 | |
| 事業再生保証 | 0 | 0 | 0.0 | 2 | 20,642 | 0.3 | 58.1 | 17 | 262,846 | 0.2 | 145.7 | 0 | 0 | 0.0 | 0.0 | |
| アシスト450 | 0 | 0 | 0.0 | 0 | 0 | 0.0 | 0.0 | 3 | 45,408 | 0.0 | 48.5 | 0 | 0 | 0.0 | 0.0 | |
| 税理士連携 | 0 | 0 | 0.0 | 0 | 0 | 0.0 | 0.0 | 5 | 133,000 | 0.1 | 100.0 | 0 | 0 | 0.0 | 0.0 | |
| NEO | 3 | 136,000 | 87.2 | 7 | 252,000 | 3.4 | 129.5 | 106 | 3,472,806 | 2.6 | 112.5 | 0 | 0 | 0.0 | 0.0 | |
| 危機関連 | 0 | 0 | 0.0 | 0 | 0 | 0.0 | 0.0 | 0 | 0 | 0.0 | 0.0 | 0 | 0 | 0.0 | 0.0 | |
| 事業承継特別 | 0 | 0 | 0.0 | 0 | 0 | 0.0 | 0.0 | 16 | 930,160 | 0.7 | 88.4 | 0 | 0 | 0.0 | 0.0 | |
| 伴走支援型特別 | 6 | 167,000 | 0.0 | 12 | 367,290 | 4.9 | 0.0 | 22 | 643,099 | 0.5 | 0.0 | 0 | 0 | 0.0 | 0.0 | |
| その他 | 0 | 0 | 0.0 | 0 | 0 | 0.0 | 0.0 | 127 | 1,742,091 | 1.3 | 94.8 | 0 | 0 | 0.0 | 0.0 | |
| 岐阜市制度 | 123 | 1,977,742 | 155.3 | 315 | 5,174,616 | 69.7 | 82.6 | 7,822 | 110,130,955 | 83.6 | 94.5 | 2 | 6,287 | 100.0 | 5.3 | |
| 中小企業振興資金 | 3 | 8,600 | 27.1 | 11 | 59,800 | 0.8 | 126.7 | 242 | 924,982 | 0.7 | 88.7 | 0 | 0 | 0.0 | 0.0 | |
| 経営環境変動対策資金 | 9 | 188,000 | 266.3 | 24 | 380,500 | 5.1 | 180.0 | 795 | 8,800,066 | 6.7 | 82.6 | 0 | 0 | 0.0 | 0.0 | |
| ぎふしアシスト短期資金 | 29 | 595,700 | 190.3 | 77 | 1,760,300 | 23.7 | 108.3 | 404 | 11,050,504 | 8.4 | 91.6 | 0 | 0 | 0.0 | 0.0 | |
| 創業者支援資金 | 2 | 14,000 | 77.8 | 7 | 49,400 | 0.7 | 130.0 | 137 | 560,120 | 0.4 | 138.6 | 0 | 0 | 0.0 | 0.0 | |
| みらい戦略資金 | 1 | 10,000 | 0.0 | 1 | 10,000 | 0.1 | 0.0 | 15 | 111,022 | 0.1 | 163.0 | 0 | 0 | 0.0 | 0.0 | |
| 雇用促進資金 | 0 | 0 | 0.0 | 0 | 0 | 0.0 | 0.0 | 43 | 265,684 | 0.2 | 63.5 | 0 | 0 | 0.0 | 0.0 | |
| ぎふし返済済みおまとめ資金 | 0 | 0 | 0.0 | 0 | 0 | 0.0 | 0.0 | 4 | 60,476 | 0.0 | 70.6 | 0 | 0 | 0.0 | 0.0 | |
| 小口零細企業資金 | 33 | 172,578 | 152.2 | 75 | 343,928 | 4.6 | 165.5 | 1,161 | 2,826,019 | 2.1 | 94.5 | 1 | 2,284 | 36.3 | 0.0 | |
| 短期資金 | 6 | 63,500 | 100.8 | 19 | 212,500 | 2.9 | 94.0 | 42 | 480,447 | 0.4 | 100.0 | 0 | 0 | 0.0 | 0.0 | |
| ぎふし経営力強化資金 | 19 | 535,364 | 146.8 | 49 | 1,359,188 | 18.3 | 198.7 | 548 | 8,541,609 | 6.5 | 90.9 | 0 | 0 | 0.0 | 0.0 | |
| 事業所建設等促進資金 | 0 | 0 | 0.0 | 0 | 0 | 0.0 | 0.0 | 54 | 1,088,936 | 0.8 | 88.1 | 0 | 0 | 0.0 | 0.0 | |
| ぎふし事業承継資金 | 0 | 0 | 0.0 | 0 | 0 | 0.0 | 0.0 | 2 | 16,872 | 0.0 | 25.0 | 0 | 0 | 0.0 | 0.0 | |
| ぎふし事業承継特別資金 | 0 | 0 | 0.0 | 1 | 30,000 | 0.4 | 11.6 | 62 | 3,167,639 | 2.4 | 103.7 | 0 | 0 | 0.0 | 0.0 | |
| ぎふし危機関連資金 | 0 | 0 | 0.0 | 0 | 0 | 0.0 | 0.0 | 153 | 6,061,381 | 4.6 | 95.2 | 0 | 0 | 0.0 | 0.0 | |
| ぎふし新型コロナ対応資金 | 0 | 0 | 0.0 | 0 | 0 | 0.0 | 0.0 | 3,958 | 63,314,963 | 48.0 | 93.6 | 1 | 4,003 | 63.7 | 19.1 | |
| ぎふし伴走支援型特別資金 | 21 | 390,000 | 261.7 | 51 | 969,000 | 13.1 | 389.2 | 164 | 2,582,489 | 2.0 | 1,268.1 | 0 | 0 | 0.0 | 0.0 | |
| その他 | 0 | 0 | 0.0 | 0 | 0 | 0.0 | 0.0 | 38 | 277,747 | 0.2 | 81.5 | 0 | 0 | 0.0 | 0.0 | |
| 合計 | 154 | 2,563,542 | 129.6 | 425 | 7,424,678 | 100.0 | 95.3 | 9,402 | 131,783,160 | 100.0 | 94.9 | 2 | 6,287 | 100.0 | 2.0 | |