

## ○事業概況【令和3年4月】

(単位:千円、%)

| 当月中 |           | 当月中<br>前年比 | 項目         | 当期中    |             | 当月末<br>前年比  |         |
|-----|-----------|------------|------------|--------|-------------|-------------|---------|
| 件数  | 金額        |            |            | 件数     | 金額          |             |         |
| /   | /         | /          | 保証<br>申込   | 期首繰越 A | 159         | 3,402,730   | 661.9   |
| 72  | 1,049,027 | 12.7       |            | 当期中 B  | 72          | 1,049,027   | 12.7    |
| 0   | 0         | 0.0        | 拒絶 C       | 0      | 0           | 0.0         |         |
| 14  | 315,000   | 318.2      | 申込取消 D     | 14     | 315,000     | 318.2       |         |
| /   | 122,472   | 606.3      | 査定減額 E     | /      | 122,472     | 606.3       |         |
| /   | /         | /          | 調査中 F      | 10     | 180,000     | 21.0        |         |
| /   | /         | /          | 保証<br>承諾   | 期首繰越 G | 9,995       | 144,433,178 | 193.5   |
| 207 | 3,834,285 | 49.2       |            | 当期中 H  | 207         | 3,834,285   | 49.2    |
| 5   | 37,300    | 0.0        | 保証後取消 I    | 5      | 37,300      | 0.0         |         |
| 326 | 6,542,940 | 259.3      | 償還 J       | 326    | 6,542,940   | 259.3       |         |
| 6   | 273,793   | 3,379.1    | 代位弁済(元金) K | 6      | 273,793     | 3,379.1     |         |
| /   | /         | /          | 貸付報告未着 L   | 70     | 1,218,618   | 40.4        |         |
| /   | /         | /          | 保証債務残高 M   | 9,795  | 140,194,812 | 182.3       |         |
| /   | /         | /          | 期首求償権残高 N  | 246    | 593,777     | 75.8        |         |
| 6   | 273,793   | 3,379.1    | 代位<br>弁済   | 元金     | 6           | 273,793     | 3,379.1 |
| /   | 269       | 763.4      |            | 利息     | /           | 269         | 763.4   |
| 6   | 274,062   | 3,367.8    |            | 合計 O   | 6           | 274,062     | 3,367.8 |
| 0   | 46,600    | 843.5      | 回収 P       | 0      | 46,600      | 843.5       |         |
| 0   | 0         | 0.0        | 償却 Q       | 0      | 0           | 0.0         |         |
| /   | /         | /          | 求償権残高 R    | 252    | 821,240     | 104.6       |         |

A+B=C+D+E+F+H

G+H=I+J+K+L+M

N+O=P+Q+R

# 実績月別推移表

## ○保証承諾

(単位:千円、%)

|     | 平成31年度 |            | 令和2年度 |             | 令和3年度 |           |      |
|-----|--------|------------|-------|-------------|-------|-----------|------|
|     | 件数     | 金額         | 件数    | 金額          | 件数    | 金額        | 前年比  |
| 4月  | 341    | 4,561,408  | 319   | 7,795,493   | 207   | 3,834,285 | 49.2 |
| 5月  | 302    | 4,434,861  | 812   | 17,517,866  |       |           |      |
| 6月  | 237    | 2,853,394  | 1,123 | 20,131,194  |       |           |      |
| 7月  | 185    | 3,042,037  | 679   | 12,117,786  |       |           |      |
| 8月  | 200    | 3,640,650  | 476   | 8,671,744   |       |           |      |
| 9月  | 195    | 2,980,140  | 314   | 5,772,455   |       |           |      |
| 10月 | 163    | 2,544,296  | 248   | 3,992,188   |       |           |      |
| 11月 | 161    | 3,260,638  | 239   | 4,171,429   |       |           |      |
| 12月 | 169    | 3,205,463  | 349   | 5,970,515   |       |           |      |
| 1月  | 143    | 2,496,165  | 186   | 3,140,048   |       |           |      |
| 2月  | 159    | 2,525,401  | 293   | 5,662,876   |       |           |      |
| 3月  | 276    | 6,200,797  | 830   | 20,713,269  |       |           |      |
| 合計  | 2,531  | 41,745,251 | 5,868 | 115,656,863 | 207   | 3,834,285 | 49.2 |

## ○保証債務残高

(単位:千円、%)

|     | 平成31年度 |            | 令和2年度 |             | 令和3年度 |             |       |
|-----|--------|------------|-------|-------------|-------|-------------|-------|
|     | 件数     | 金額         | 件数    | 金額          | 件数    | 金額          | 前年比   |
| 4月  | 6,658  | 72,298,930 | 6,820 | 76,883,233  | 9,795 | 140,194,812 | 182.3 |
| 5月  | 6,750  | 73,532,866 | 7,186 | 86,644,724  |       |             |       |
| 6月  | 6,782  | 74,257,091 | 7,953 | 101,940,779 |       |             |       |
| 7月  | 6,789  | 74,130,784 | 8,499 | 113,134,567 |       |             |       |
| 8月  | 6,780  | 73,973,601 | 8,789 | 118,151,057 |       |             |       |
| 9月  | 6,792  | 73,908,121 | 8,998 | 122,182,658 |       |             |       |
| 10月 | 6,783  | 73,427,298 | 9,088 | 123,885,126 |       |             |       |
| 11月 | 6,771  | 72,919,918 | 9,166 | 125,224,716 |       |             |       |
| 12月 | 6,730  | 72,224,358 | 9,301 | 127,239,928 |       |             |       |
| 1月  | 6,689  | 71,500,498 | 9,373 | 127,498,202 |       |             |       |
| 2月  | 6,658  | 70,872,851 | 9,429 | 128,113,229 |       |             |       |
| 3月  | 6,688  | 72,151,975 | 9,629 | 135,054,447 |       |             |       |

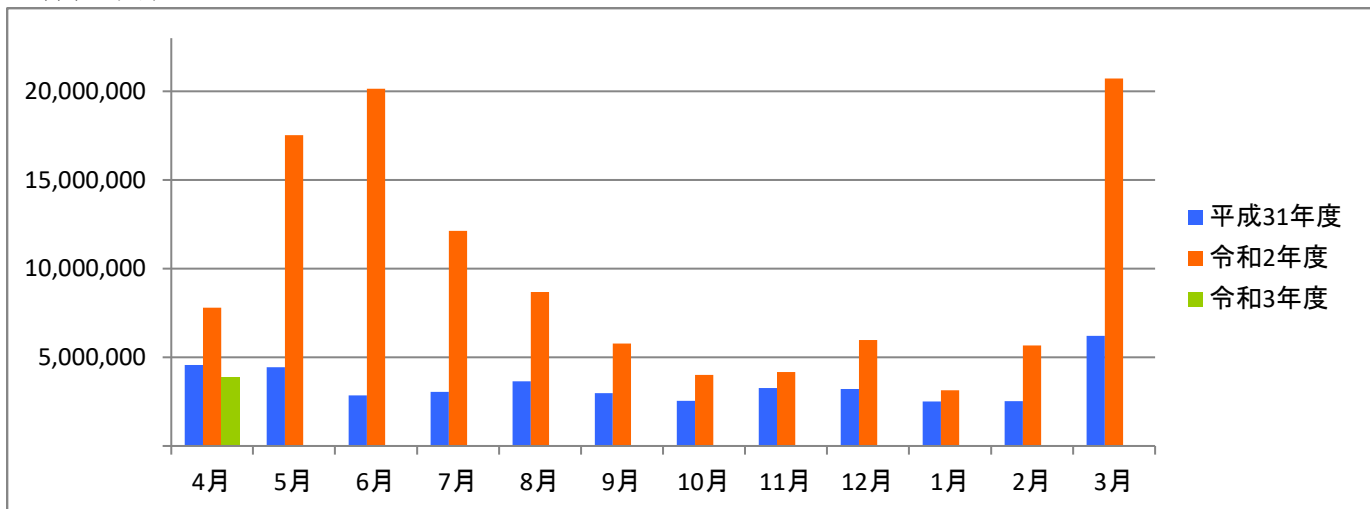
## ○代位弁済

(単位:千円、%)

|     | 平成31年度 |           | 令和2年度 |         | 令和3年度 |         |         |
|-----|--------|-----------|-------|---------|-------|---------|---------|
|     | 件数     | 金額        | 件数    | 金額      | 件数    | 金額      | 前年比     |
| 4月  | 8      | 46,493    | 5     | 8,138   | 6     | 274,062 | 3,367.8 |
| 5月  | 9      | 95,052    | 2     | 34,931  |       |         |         |
| 6月  | 8      | 33,936    | 6     | 51,531  |       |         |         |
| 7月  | 9      | 207,290   | 3     | 8,140   |       |         |         |
| 8月  | 2      | 6,136     | 0     |         |       |         |         |
| 9月  | 5      | 60,578    | 3     | 77,539  |       |         |         |
| 10月 | 3      | 13,022    | 3     | 27,600  |       |         |         |
| 11月 | 17     | 233,165   | 3     | 4,111   |       |         |         |
| 12月 | 25     | 379,014   | 1     | 103     |       |         |         |
| 1月  | 13     | 118,602   | 3     | 18,180  |       |         |         |
| 2月  | 4      | 79,986    | 0     |         |       |         |         |
| 3月  | 6      | 39,279    | 5     | 116,978 |       |         |         |
| 合計  | 109    | 1,312,555 | 34    | 347,251 | 6     | 274,062 | 3,367.8 |

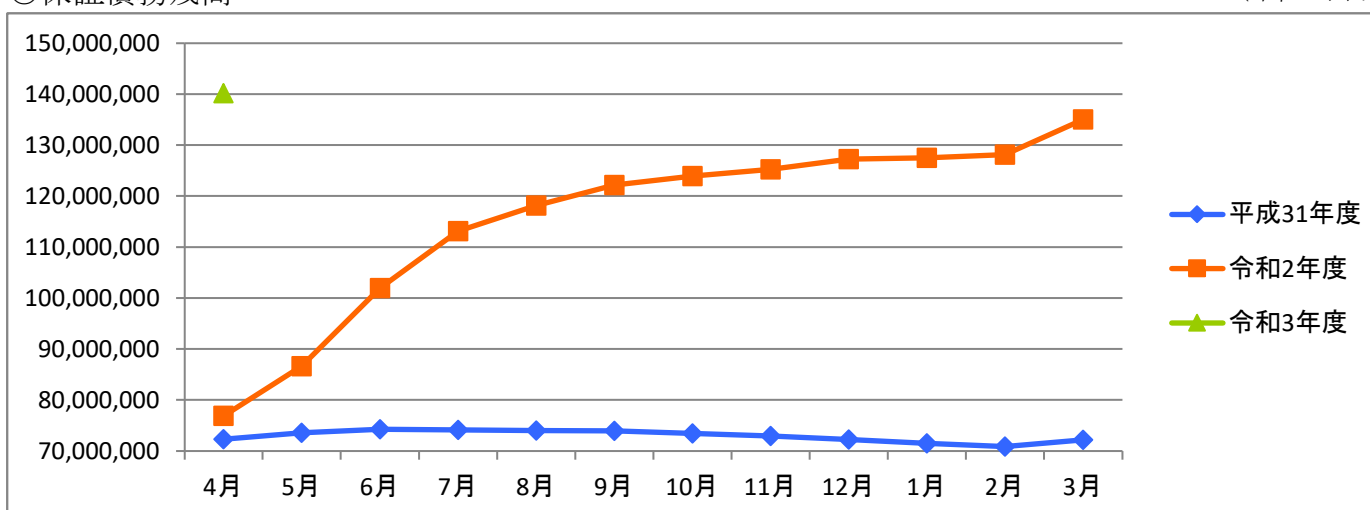
○保証承諾

(単位:千円)



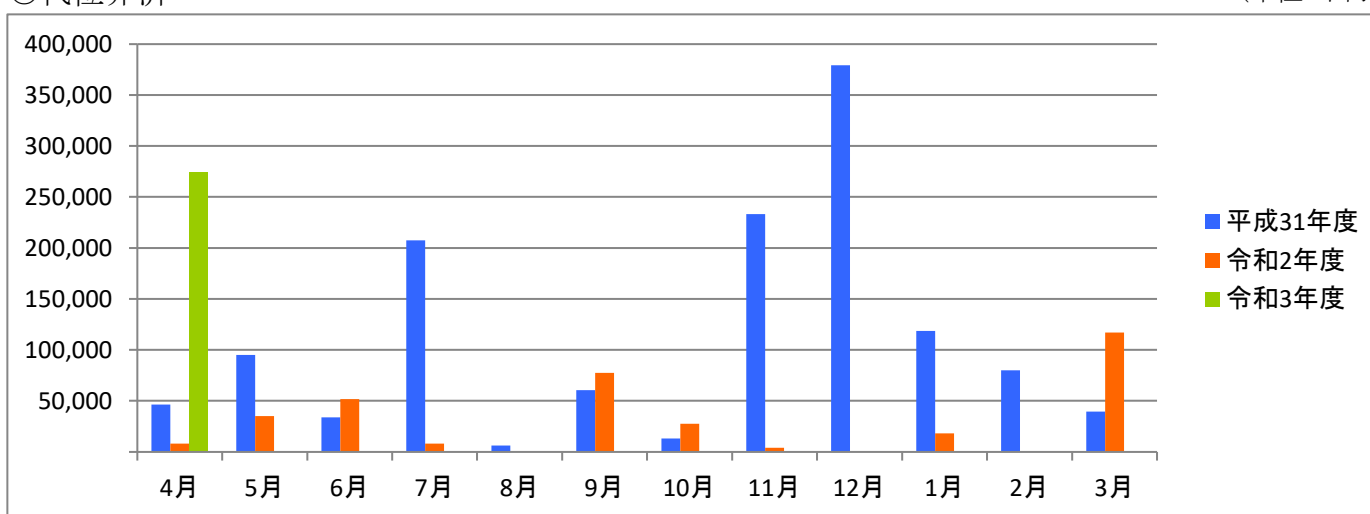
○保証債務残高

(単位:千円)



○代位弁済

(単位:千円)



# 資金使途別・金額別・期間別保証状況

## ○資金使途別保証状況【令和3年4月】

(単位:千円、%)

| 区分     | 保証承諾 |           |      |     |           |       |      |       | 保証債務残高      |       |       |     | 代位弁済    |       |         |  |
|--------|------|-----------|------|-----|-----------|-------|------|-------|-------------|-------|-------|-----|---------|-------|---------|--|
|        | 当月中  |           |      | 当期中 |           |       |      | 当期中   |             |       |       | 当期中 |         |       |         |  |
|        | 件数   | 金額        | 前年比  | 件数  | 金額        | 構成比   | 前年比  | 件数    | 金額          | 構成比   | 前年比   | 件数  | 金額      | 構成比   | 前年比     |  |
| 運転資金   | 189  | 3,725,085 | 49.7 | 189 | 3,725,085 | 97.2  | 49.7 | 8,418 | 130,091,090 | 92.8  | 199.2 | 6   | 274,062 | 100.0 | 3,803.1 |  |
| 設備資金   | 7    | 35,700    | 33.6 | 7   | 35,700    | 0.9   | 33.6 | 609   | 3,673,045   | 2.6   | 86.9  | 0   | 0       | 0.0   | 0.0     |  |
| 運転設備資金 | 11   | 73,500    | 38.5 | 11  | 73,500    | 1.9   | 38.5 | 768   | 6,430,677   | 4.6   | 87.4  | 0   | 0       | 0.0   | 0.0     |  |
| 合計     | 207  | 3,834,285 | 49.2 | 207 | 3,834,285 | 100.0 | 49.2 | 9,795 | 140,194,812 | 100.0 | 182.3 | 6   | 274,062 | 100.0 | 3367.8  |  |

## ○金額別保証状況【令和3年4月】

(単位:千円、%)

| 区分        | 保証承諾 |           |       |     |           |       |       |       | 保証債務残高      |       |       |     | 代位弁済    |       |        |  |
|-----------|------|-----------|-------|-----|-----------|-------|-------|-------|-------------|-------|-------|-----|---------|-------|--------|--|
|           | 当月中  |           |       | 当期中 |           |       |       | 当期中   |             |       |       | 当期中 |         |       |        |  |
|           | 件数   | 金額        | 前年比   | 件数  | 金額        | 構成比   | 前年比   | 件数    | 金額          | 構成比   | 前年比   | 件数  | 金額      | 構成比   | 前年比    |  |
| 100万円以下   | 8    | 7,700     | 63.6  | 8   | 7,700     | 0.2   | 63.6  | 283   | 171,765     | 0.1   | 148.8 | 0   | 0       | 0.0   | 0.0    |  |
| 200万円以下   | 9    | 14,800    | 36.5  | 9   | 14,800    | 0.4   | 36.5  | 598   | 721,406     | 0.5   | 137.3 | 0   | 0       | 0.0   | 0.0    |  |
| 300万円以下   | 11   | 31,500    | 65.6  | 11  | 31,500    | 0.8   | 65.6  | 719   | 1,401,324   | 1.0   | 127.7 | 1   | 2,494   | 0.9   | 0.0    |  |
| 500万円以下   | 29   | 139,000   | 103.0 | 29  | 139,000   | 3.6   | 103.0 | 1,264 | 4,103,915   | 2.9   | 138.3 | 0   | 0       | 0.0   | 0.0    |  |
| 1,000万円以下 | 49   | 446,618   | 76.3  | 49  | 446,618   | 11.6  | 76.3  | 2,259 | 15,438,662  | 11.0  | 178.0 | 0   | 0       | 0.0   | 0.0    |  |
| 1,500万円以下 | 16   | 222,000   | 94.1  | 16  | 222,000   | 5.8   | 94.1  | 783   | 8,020,952   | 5.7   | 143.9 | 1   | 4,052   | 1.5   | 0.0    |  |
| 2,000万円以下 | 36   | 720,000   | 97.0  | 36  | 720,000   | 18.8  | 97.0  | 1,247 | 20,207,400  | 14.4  | 192.7 | 0   | 0       | 0.0   | 0.0    |  |
| 3,000万円以下 | 17   | 490,667   | 42.1  | 17  | 490,667   | 12.8  | 42.1  | 1,206 | 28,946,397  | 20.6  | 255.5 | 1   | 25,026  | 9.1   | 0.0    |  |
| 5,000万円以下 | 15   | 675,000   | 50.1  | 15  | 675,000   | 17.6  | 50.1  | 977   | 34,360,002  | 24.5  | 164.4 | 0   | 0       | 0.0   | 0.0    |  |
| 6,000万円以下 | 13   | 780,000   | 190.2 | 13  | 780,000   | 20.3  | 190.2 | 197   | 10,511,662  | 7.5   | 432.6 | 0   | 0       | 0.0   | 0.0    |  |
| 7,000万円以下 | 1    | 70,000    | 25.5  | 1   | 70,000    | 1.8   | 25.5  | 67    | 3,100,566   | 2.2   | 116.4 | 0   | 0       | 0.0   | 0.0    |  |
| 8,000万円以下 | 3    | 237,000   | 11.0  | 3   | 237,000   | 6.2   | 11.0  | 127   | 7,667,123   | 5.5   | 142.0 | 1   | 62,082  | 22.7  | 0.0    |  |
| 1億円以下     | 0    | 0         | 0.0   | 0   | 0         | 0.0   | 0.0   | 25    | 1,448,287   | 1.0   | 91.5  | 2   | 180,409 | 65.8  | 0.0    |  |
| 2億円以下     | 0    | 0         | 0.0   | 0   | 0         | 0.0   | 0.0   | 43    | 4,095,350   | 2.9   | 130.6 | 0   | 0       | 0.0   | 0.0    |  |
| 3億円以下     | 0    | 0         | 0.0   | 0   | 0         | 0.0   | 0.0   | 0     | 0           | 0.0   | 0.0   | 0   | 0       | 0.0   | 0.0    |  |
| 4億円以下     | 0    | 0         | 0.0   | 0   | 0         | 0.0   | 0.0   | 0     | 0           | 0.0   | 0.0   | 0   | 0       | 0.0   | 0.0    |  |
| 5億円以下     | 0    | 0         | 0.0   | 0   | 0         | 0.0   | 0.0   | 0     | 0           | 0.0   | 0.0   | 0   | 0       | 0.0   | 0.0    |  |
| 5億円超      | 0    | 0         | 0.0   | 0   | 0         | 0.0   | 0.0   | 0     | 0           | 0.0   | 0.0   | 0   | 0       | 0.0   | 0.0    |  |
| 合計        | 207  | 3,834,285 | 49.2  | 207 | 3,834,285 | 100.0 | 49.2  | 9,795 | 140,194,812 | 100.0 | 182.3 | 6   | 274,062 | 100.0 | 3367.8 |  |

## ○期間別保証状況【令和3年4月】

(単位:千円、%)

| 区分    | 保証承諾 |           |         |     |           |       |         |       | 保証債務残高      |       |         |     | 代位弁済    |       |         |  |
|-------|------|-----------|---------|-----|-----------|-------|---------|-------|-------------|-------|---------|-----|---------|-------|---------|--|
|       | 当月中  |           |         | 当期中 |           |       |         | 当期中   |             |       |         | 当期中 |         |       |         |  |
|       | 件数   | 金額        | 前年比     | 件数  | 金額        | 構成比   | 前年比     | 件数    | 金額          | 構成比   | 前年比     | 件数  | 金額      | 構成比   | 前年比     |  |
| 3カ月以下 | 0    | 0         | 0.0     | 0   | 0         | 0.0   | 0.0     | 3     | 30,500      | 0.0   | 44.9    | 0   | 0       | 0.0   | 0.0     |  |
| 6カ月以下 | 3    | 71,000    | 142.0   | 3   | 71,000    | 1.9   | 142.0   | 20    | 221,528     | 0.2   | 46.5    | 2   | 92,073  | 33.6  | 0.0     |  |
| 1年以下  | 36   | 770,667   | 78.0    | 36  | 770,667   | 20.1  | 78.0    | 616   | 14,913,178  | 10.6  | 87.1    | 0   | 0       | 0.0   | 0.0     |  |
| 2年以下  | 9    | 65,500    | 42.4    | 9   | 65,500    | 1.7   | 42.4    | 314   | 3,401,499   | 2.4   | 87.7    | 0   | 0       | 0.0   | 0.0     |  |
| 3年以下  | 13   | 331,500   | 975.0   | 13  | 331,500   | 8.6   | 975.0   | 561   | 7,350,926   | 5.2   | 1,293.9 | 1   | 25,026  | 9.1   | 0.0     |  |
| 4年以下  | 2    | 22,000    | 3,142.9 | 2   | 22,000    | 0.6   | 3,142.9 | 107   | 552,080     | 0.4   | 208.9   | 0   | 0       | 0.0   | 0.0     |  |
| 5年以下  | 16   | 159,400   | 51.0    | 16  | 159,400   | 4.2   | 51.0    | 1,350 | 7,635,607   | 5.4   | 140.3   | 0   | 0       | 0.0   | 0.0     |  |
| 7年以下  | 23   | 239,500   | 9.1     | 23  | 239,500   | 6.2   | 9.1     | 2,668 | 24,487,123  | 17.5  | 104.0   | 0   | 0       | 0.0   | 0.0     |  |
| 10年以下 | 104  | 2,166,718 | 60.2    | 104 | 2,166,718 | 56.5  | 60.2    | 3,967 | 76,420,623  | 54.5  | 385.3   | 2   | 64,576  | 23.6  | 0.0     |  |
| 10年超  | 1    | 8,000     | 0.0     | 1   | 8,000     | 0.2   | 0.0     | 189   | 5,181,749   | 3.7   | 91.0    | 1   | 92,387  | 33.7  | 0.0     |  |
| 合計    | 207  | 3,834,285 | 49.2    | 207 | 3,834,285 | 100.0 | 49.2    | 9,795 | 140,194,812 | 100.0 | 182.3   | 6   | 274,062 | 100.0 | 3,367.8 |  |

## ○業種別保証状況【令和3年4月】

(単位:千円、%)

| 区分          | 保証承諾 |           |         |     |           |       |         |       | 保証債務残高      |       |       |     | 代位弁済    |       |         |  |
|-------------|------|-----------|---------|-----|-----------|-------|---------|-------|-------------|-------|-------|-----|---------|-------|---------|--|
|             | 当月中  |           |         | 当期中 |           |       |         | 当期中   |             |       |       | 当期中 |         |       |         |  |
|             | 件数   | 金額        | 前年比     | 件数  | 金額        | 構成比   | 前年比     | 件数    | 金額          | 構成比   | 前年比   | 件数  | 金額      | 構成比   | 前年比     |  |
| 製造業         | 29   | 715,630   | 56.9    | 29  | 715,630   | 18.7  | 56.9    | 1,559 | 23,595,999  | 16.8  | 184.3 | 0   | 0       | 0.0   | 0.0     |  |
| 食料品工業       | 3    | 46,000    | 20.7    | 3   | 46,000    | 1.2   | 20.7    | 139   | 2,759,946   | 2.0   | 168.1 | 0   | 0       | 0.0   | 0.0     |  |
| 繊維品工業       | 5    | 176,000   | 55.5    | 5   | 176,000   | 4.6   | 55.5    | 349   | 4,191,813   | 3.0   | 165.7 | 0   | 0       | 0.0   | 0.0     |  |
| 木材・木製品工業    | 0    | 0         | 0.0     | 0   | 0         | 0.0   | 0.0     | 29    | 388,176     | 0.3   | 147.6 | 0   | 0       | 0.0   | 0.0     |  |
| 家具・建具工業     | 0    | 0         | 0.0     | 0   | 0         | 0.0   | 0.0     | 71    | 891,872     | 0.6   | 183.5 | 0   | 0       | 0.0   | 0.0     |  |
| 紙工業         | 3    | 160,000   | 1,600.0 | 3   | 160,000   | 4.2   | 1,600.0 | 49    | 1,054,501   | 0.8   | 205.0 | 0   | 0       | 0.0   | 0.0     |  |
| 印刷・製本業      | 2    | 5,500     | 84.6    | 2   | 5,500     | 0.1   | 84.6    | 152   | 2,405,212   | 1.7   | 163.8 | 0   | 0       | 0.0   | 0.0     |  |
| 化学工業        | 2    | 22,000    | 0.0     | 2   | 22,000    | 0.6   | 0.0     | 19    | 380,466     | 0.3   | 466.2 | 0   | 0       | 0.0   | 0.0     |  |
| 石油・石炭製品工業   | 0    | 0         | 0.0     | 0   | 0         | 0.0   | 0.0     | 0     | 0           | 0.0   | 0.0   | 0   | 0       | 0.0   | 0.0     |  |
| ゴム・プラスチック工業 | 0    | 0         | 0.0     | 0   | 0         | 0.0   | 0.0     | 71    | 1,084,008   | 0.8   | 173.6 | 0   | 0       | 0.0   | 0.0     |  |
| ゴム製品製造業     | 0    | 0         | 0.0     | 0   | 0         | 0.0   | 0.0     | 5     | 59,352      | 0.0   | ##### | 0   | 0       | 0.0   | 0.0     |  |
| 皮革工業        | 0    | 0         | 0.0     | 0   | 0         | 0.0   | 0.0     | 0     | 0           | 0.0   | 0.0   | 0   | 0       | 0.0   | 0.0     |  |
| 窯業          | 1    | 20,000    | 0.0     | 1   | 20,000    | 0.5   | 0.0     | 20    | 420,489     | 0.3   | 168.6 | 0   | 0       | 0.0   | 0.0     |  |
| 機械工業        | 3    | 115,630   | 44.4    | 3   | 115,630   | 3.0   | 44.4    | 134   | 2,639,325   | 1.9   | 194.3 | 0   | 0       | 0.0   | 0.0     |  |
| 電気機器工業      | 2    | 68,000    | 0.0     | 2   | 68,000    | 1.8   | 0.0     | 29    | 459,651     | 0.3   | 177.9 | 0   | 0       | 0.0   | 0.0     |  |
| 車輛工業        | 0    | 0         | 0.0     | 0   | 0         | 0.0   | 0.0     | 26    | 364,358     | 0.3   | 398.1 | 0   | 0       | 0.0   | 0.0     |  |
| 船舶工業        | 0    | 0         | 0.0     | 0   | 0         | 0.0   | 0.0     | 0     | 0           | 0.0   | 0.0   | 0   | 0       | 0.0   | 0.0     |  |
| 金属工業        | 1    | 13,000    | 4.7     | 1   | 13,000    | 0.3   | 4.7     | 147   | 2,790,008   | 2.0   | 228.3 | 0   | 0       | 0.0   | 0.0     |  |
| ソフトウェア業     | 0    | 0         | 0.0     | 0   | 0         | 0.0   | 0.0     | 70    | 1,125,794   | 0.8   | 217.7 | 0   | 0       | 0.0   | 0.0     |  |
| 情報処理サービス業   | 0    | 0         | 0.0     | 0   | 0         | 0.0   | 0.0     | 2     | 10,950      | 0.0   | 101.8 | 0   | 0       | 0.0   | 0.0     |  |
| その他の工業      | 7    | 89,500    | 164.2   | 7   | 89,500    | 2.3   | 164.2   | 247   | 2,570,077   | 1.8   | 173.1 | 0   | 0       | 0.0   | 0.0     |  |
| 農林漁業        | 0    | 0         | 0.0     | 0   | 0         | 0.0   | 0.0     | 3     | 18,922      | 0.0   | 71.6  | 0   | 0       | 0.0   | 0.0     |  |
| 鉱業          | 0    | 0         | 0.0     | 0   | 0         | 0.0   | 0.0     | 7     | 123,979     | 0.1   | 233.6 | 0   | 0       | 0.0   | 0.0     |  |
| 建設業         | 53   | 823,718   | 39.7    | 53  | 823,718   | 21.5  | 39.7    | 2,483 | 35,218,477  | 25.1  | 187.4 | 1   | 2,494   | 0.9   | 55.4    |  |
| 卸売業         | 29   | 797,500   | 53.0    | 29  | 797,500   | 20.8  | 53.0    | 1,605 | 30,304,995  | 21.6  | 174.9 | 5   | 271,568 | 99.1  | 0.0     |  |
| 小売業         | 22   | 515,000   | 52.8    | 22  | 515,000   | 13.4  | 52.8    | 1,266 | 17,563,764  | 12.5  | 174.0 | 0   | 0       | 0.0   | 0.0     |  |
| 飲食店         | 16   | 279,737   | 42.9    | 16  | 279,737   | 7.3   | 42.9    | 623   | 5,762,313   | 4.1   | 204.8 | 0   | 0       | 0.0   | 0.0     |  |
| 運送倉庫業       | 4    | 85,000    | 45.9    | 4   | 85,000    | 2.2   | 45.9    | 162   | 3,242,745   | 2.3   | 180.6 | 0   | 0       | 0.0   | 0.0     |  |
| サービス業       | 48   | 564,900   | 63.2    | 48  | 564,900   | 14.7  | 63.2    | 1,759 | 20,268,656  | 14.5  | 195.0 | 0   | 0       | 0.0   | 0.0     |  |
| 不動産業        | 4    | 17,000    | 210.8   | 4   | 17,000    | 0.4   | 210.8   | 201   | 1,979,038   | 1.4   | 142.5 | 0   | 0       | 0.0   | 0.0     |  |
| その他の産業      | 2    | 35,800    | 14.4    | 2   | 35,800    | 0.9   | 14.4    | 127   | 2,115,923   | 1.5   | 152.5 | 0   | 0       | 0.0   | 0.0     |  |
| 合計          | 207  | 3,834,285 | 49.2    | 207 | 3,834,285 | 100.0 | 49.2    | 9,795 | 140,194,812 | 100.0 | 182.3 | 6   | 274,062 | 100.0 | 3,367.8 |  |

○金融機関別保証状況【令和3年4月】

(単位:千円、%)

| 区分       | 保証承諾 |           |       |     |           |       |       | 保証債務残高 |             |       |         | 代位弁済 |         |       |         |
|----------|------|-----------|-------|-----|-----------|-------|-------|--------|-------------|-------|---------|------|---------|-------|---------|
|          | 当月中  |           |       | 当期中 |           |       |       | 当期中    |             |       |         | 当期中  |         |       |         |
|          | 件数   | 金額        | 前年比   | 件数  | 金額        | 構成比   | 前年比   | 件数     | 金額          | 構成比   | 前年比     | 件数   | 金額      | 構成比   | 前年比     |
| みずほ銀行    | 0    | 0         | 0.0   | 0   | 0         | 0.0   | 0.0   | 3      | 86,091      | 0.1   | 572.7   | 0    | 0       | 0.0   | 0.0     |
| 三菱UFJ銀行  | 0    | 0         | 0.0   | 0   | 0         | 0.0   | 0.0   | 25     | 384,733     | 0.3   | 194.8   | 0    | 0       | 0.0   | 0.0     |
| 三井住友銀行   | 0    | 0         | 0.0   | 0   | 0         | 0.0   | 0.0   | 2      | 20,361      | 0.0   | 78.5    | 0    | 0       | 0.0   | 0.0     |
| 小計       | 0    | 0         | 0.0   | 0   | 0         | 0.0   | 0.0   | 30     | 491,185     | 0.4   | 205.9   | 0    | 0       | 0.0   | 0.0     |
| 十六銀行     | 53   | 1,095,800 | 55.2  | 53  | 1,095,800 | 28.6  | 55.2  | 3,192  | 47,303,461  | 33.7  | 174.0   | 0    | 0       | 0.0   | 0.0     |
| 大垣共立銀行   | 30   | 526,148   | 34.9  | 30  | 526,148   | 13.7  | 34.9  | 1,281  | 21,472,856  | 15.3  | 255.5   | 1    | 2,494   | 0.9   | 895.9   |
| 北陸銀行     | 0    | 0         | 0.0   | 0   | 0         | 0.0   | 0.0   | 27     | 505,336     | 0.4   | 281.5   | 0    | 0       | 0.0   | 0.0     |
| 小計       | 83   | 1,621,948 | 46.2  | 83  | 1,621,948 | 42.3  | 46.2  | 4,500  | 69,281,653  | 49.4  | 193.7   | 1    | 2,494   | 0.9   | 92.4    |
| 愛知銀行     | 0    | 0         | 0.0   | 0   | 0         | 0.0   | 0.0   | 33     | 530,577     | 0.4   | 1,060.6 | 0    | 0       | 0.0   | 0.0     |
| 名古屋銀行    | 0    | 0         | 0.0   | 0   | 0         | 0.0   | 0.0   | 55     | 946,701     | 0.7   | 408.3   | 0    | 0       | 0.0   | 0.0     |
| 中京銀行     | 0    | 0         | 0.0   | 0   | 0         | 0.0   | 0.0   | 2      | 36,318      | 0.0   | 77.2    | 0    | 0       | 0.0   | 0.0     |
| 第三銀行     | 1    | 1,000     | 0.0   | 1   | 1,000     | 0.0   | 0.0   | 9      | 97,918      | 0.1   | 469.2   | 0    | 0       | 0.0   | 0.0     |
| 小計       | 1    | 1,000     | 0.0   | 1   | 1,000     | 0.0   | 0.0   | 99     | 1,611,514   | 1.1   | 460.7   | 0    | 0       | 0.0   | 0.0     |
| 岐阜信用金庫   | 113  | 2,090,837 | 53.6  | 113 | 2,090,837 | 54.5  | 53.6  | 4,207  | 61,598,822  | 43.9  | 174.1   | 5    | 271,568 | 99.1  | 6,026.9 |
| 大垣西濃信用金庫 | 3    | 80,000    | 177.8 | 3   | 80,000    | 2.1   | 177.8 | 203    | 2,094,935   | 1.5   | 257.3   | 0    | 0       | 0.0   | 0.0     |
| 関信用金庫    | 0    | 0         | 0.0   | 0   | 0         | 0.0   | 0.0   | 82     | 578,974     | 0.4   | 214.3   | 0    | 0       | 0.0   | 0.0     |
| 小計       | 116  | 2,170,837 | 54.9  | 116 | 2,170,837 | 56.6  | 54.9  | 4,492  | 64,272,730  | 45.8  | 176.3   | 5    | 271,568 | 99.1  | 6,026.9 |
| 商工組合中央金庫 | 0    | 0         | 0.0   | 0   | 0         | 0.0   | 0.0   | 13     | 182,496     | 0.1   | 81.1    | 0    | 0       | 0.0   | 0.0     |
| 日本政策金融公庫 | 0    | 0         | 0.0   | 0   | 0         | 0.0   | 0.0   | 0      | 0           | 0.0   | 0.0     | 0    | 0       | 0.0   | 0.0     |
| 小計       | 0    | 0         | 0.0   | 0   | 0         | 0.0   | 0.0   | 13     | 182,496     | 0.1   | 81.1    | 0    | 0       | 0.0   | 0.0     |
| 岐阜商工信用組合 | 7    | 40,500    | 16.5  | 7   | 40,500    | 1.1   | 16.5  | 644    | 4,269,535   | 3.0   | 111.6   | 0    | 0       | 0.0   | 0.0     |
| 小計       | 7    | 40,500    | 16.5  | 7   | 40,500    | 1.1   | 16.5  | 644    | 4,269,535   | 3.0   | 111.6   | 0    | 0       | 0.0   | 0.0     |
| ぎふ農業協同組合 | 0    | 0         | 0.0   | 0   | 0         | 0.0   | 0.0   | 17     | 85,699      | 0.1   | 375.4   | 0    | 0       | 0.0   | 0.0     |
| 小計       | 0    | 0         | 0.0   | 0   | 0         | 0.0   | 0.0   | 17     | 85,699      | 0.1   | 375.4   | 0    | 0       | 0.0   | 0.0     |
| 合計       | 207  | 3,834,285 | 49.2  | 207 | 3,834,285 | 100.0 | 49.2  | 9,795  | 140,194,812 | 100.0 | 182.3   | 6    | 274,062 | 100.0 | 3,367.8 |

○制度別保証状況【令和3年4月】

(単位:千円、%)

| 区分               | 保証承諾 |           |       |     |           |       |       |       | 保証債務残高      |       |       |     | 代位弁済    |       |          |  |
|------------------|------|-----------|-------|-----|-----------|-------|-------|-------|-------------|-------|-------|-----|---------|-------|----------|--|
|                  | 当月中  |           |       | 当期中 |           |       |       | 当期中   |             |       |       | 当期中 |         |       |          |  |
|                  | 件数   | 金額        | 前年比   | 件数  | 金額        | 構成比   | 前年比   | 件数    | 金額          | 構成比   | 前年比   | 件数  | 金額      | 構成比   | 前年比      |  |
| 協会制度             | 18   | 433,430   | 35.4  | 18  | 433,430   | 11.3  | 35.4  | 1,700 | 22,950,291  | 16.4  | 89.6  | 3   | 184,461 | 67.3  | 15,245.2 |  |
| 普通保証             | 1    | 8,000     | 2.9   | 1   | 8,000     | 0.2   | 2.9   | 247   | 4,597,138   | 3.3   | 77.2  | 2   | 180,409 | 65.8  | 0.0      |  |
| 無担保保証            | 2    | 17,000    | 10.5  | 2   | 17,000    | 0.4   | 10.5  | 726   | 5,251,667   | 3.7   | 76.0  | 1   | 4,052   | 1.5   | 334.9    |  |
| 当座貸越根保証          | 4    | 38,000    | 25.3  | 4   | 38,000    | 1.0   | 25.3  | 139   | 2,525,903   | 1.8   | 90.6  | 0   | 0       | 0.0   | 0.0      |  |
| 無担保当座貸越根保証       | 0    | 0         | 0.0   | 0   | 0         | 0.0   | 0.0   | 2     | 8,825       | 0.0   | 88.4  | 0   | 0       | 0.0   | 0.0      |  |
| 事業者カードローン当座貸越根保証 | 4    | 25,000    | 555.6 | 4   | 25,000    | 0.7   | 555.6 | 149   | 902,503     | 0.6   | 82.4  | 0   | 0       | 0.0   | 0.0      |  |
| 長期経営資金保証         | 0    | 0         | 0.0   | 0   | 0         | 0.0   | 0.0   | 13    | 332,770     | 0.2   | 87.0  | 0   | 0       | 0.0   | 0.0      |  |
| 中小企業特定社債保証       | 2    | 120,000   | 0.0   | 2   | 120,000   | 3.1   | 0.0   | 26    | 969,600     | 0.7   | 142.5 | 0   | 0       | 0.0   | 0.0      |  |
| 経営安定関連保証         | 0    | 0         | 0.0   | 0   | 0         | 0.0   | 0.0   | 78    | 1,067,183   | 0.8   | 78.0  | 0   | 0       | 0.0   | 0.0      |  |
| 経営革新関連保証         | 0    | 0         | 0.0   | 0   | 0         | 0.0   | 0.0   | 1     | 980         | 0.0   | 15.7  | 0   | 0       | 0.0   | 0.0      |  |
| 小口零細企業保証         | 0    | 0         | 0.0   | 0   | 0         | 0.0   | 0.0   | 14    | 36,847      | 0.0   | 78.7  | 0   | 0       | 0.0   | 0.0      |  |
| 東日本大震災復興緊急保証     | 0    | 0         | 0.0   | 0   | 0         | 0.0   | 0.0   | 10    | 188,419     | 0.1   | 85.2  | 0   | 0       | 0.0   | 0.0      |  |
| 経営力強化保証          | 3    | 125,430   | 100.0 | 3   | 125,430   | 3.3   | 100.0 | 25    | 639,921     | 0.5   | 82.3  | 0   | 0       | 0.0   | 0.0      |  |
| 経営者保証ガイドライン対応保証  | 0    | 0         | 0.0   | 0   | 0         | 0.0   | 0.0   | 0     | 0           | 0.0   | 0.0   | 0   | 0       | 0.0   | 0.0      |  |
| 事業再生保証           | 0    | 0         | 0.0   | 0   | 0         | 0.0   | 0.0   | 11    | 161,563     | 0.1   | 154.7 | 0   | 0       | 0.0   | 0.0      |  |
| アシスト450          | 0    | 0         | 0.0   | 0   | 0         | 0.0   | 0.0   | 5     | 93,914      | 0.1   | 79.4  | 0   | 0       | 0.0   | 0.0      |  |
| 税理士連携            | 0    | 0         | 0.0   | 0   | 0         | 0.0   | 0.0   | 5     | 133,000     | 0.1   | 100.0 | 0   | 0       | 0.0   | 0.0      |  |
| NEO              | 0    | 0         | 0.0   | 0   | 0         | 0.0   | 0.0   | 89    | 3,113,316   | 2.2   | 112.7 | 0   | 0       | 0.0   | 0.0      |  |
| 危機関連             | 0    | 0         | 0.0   | 0   | 0         | 0.0   | 0.0   | 0     | 0           | 0.0   | 0.0   | 0   | 0       | 0.0   | 0.0      |  |
| 事業承継特別           | 2    | 100,000   | 0.0   | 2   | 100,000   | 2.6   | 0.0   | 16    | 1,072,680   | 0.8   | 0.0   | 0   | 0       | 0.0   | 0.0      |  |
| その他              | 0    | 0         | 0.0   | 0   | 0         | 0.0   | 0.0   | 144   | 1,854,064   | 1.3   | 85.4  | 0   | 0       | 0.0   | 0.0      |  |
| 岐阜市制度            | 189  | 3,400,855 | 51.8  | 189 | 3,400,855 | 88.7  | 51.8  | 8,095 | 117,244,521 | 83.6  | 228.7 | 3   | 89,602  | 32.7  | 1,293.4  |  |
| 中小企業振興資金         | 1    | 13,000    | 130.0 | 1   | 13,000    | 0.3   | 130.0 | 263   | 1,097,181   | 0.8   | 80.9  | 0   | 0       | 0.0   | 0.0      |  |
| 経営環境変動対策資金       | 6    | 72,300    | 3.1   | 6   | 72,300    | 1.9   | 3.1   | 971   | 11,064,721  | 7.9   | 84.9  | 2   | 87,107  | 31.8  | 0.0      |  |
| ぎふしアシスト短期資金      | 22   | 460,000   | 96.4  | 22  | 460,000   | 12.0  | 96.4  | 478   | 12,383,572  | 8.8   | 84.5  | 0   | 0       | 0.0   | 0.0      |  |
| 創業者支援資金          | 3    | 17,000    | 340.0 | 3   | 17,000    | 0.4   | 340.0 | 131   | 410,116     | 0.3   | 89.2  | 0   | 0       | 0.0   | 0.0      |  |
| みらい戦略資金          | 0    | 0         | 0.0   | 0   | 0         | 0.0   | 0.0   | 13    | 70,939      | 0.1   | 77.1  | 0   | 0       | 0.0   | 0.0      |  |
| 雇用促進資金           | 0    | 0         | 0.0   | 0   | 0         | 0.0   | 0.0   | 66    | 442,265     | 0.3   | 71.4  | 0   | 0       | 0.0   | 0.0      |  |
| ぎふし返済済おまとめ資金     | 0    | 0         | 0.0   | 0   | 0         | 0.0   | 0.0   | 8     | 87,520      | 0.1   | 72.6  | 0   | 0       | 0.0   | 0.0      |  |
| 小口零細企業資金         | 9    | 33,500    | 17.9  | 9   | 33,500    | 0.9   | 17.9  | 1,249 | 3,042,451   | 2.2   | 66.9  | 0   | 0       | 0.0   | 0.0      |  |
| 短期資金             | 7    | 101,000   | 109.8 | 7   | 101,000   | 2.6   | 109.8 | 44    | 516,237     | 0.4   | 83.2  | 0   | 0       | 0.0   | 0.0      |  |
| ぎふし経営力強化資金       | 6    | 95,155    | 42.2  | 6   | 95,155    | 2.5   | 42.2  | 588   | 9,505,227   | 6.8   | 81.8  | 0   | 0       | 0.0   | 0.0      |  |
| 事業所建設等促進資金       | 1    | 8,000     | 0.0   | 1   | 8,000     | 0.2   | 0.0   | 53    | 1,211,364   | 0.9   | 89.0  | 0   | 0       | 0.0   | 0.0      |  |
| ぎふし事業承継資金        | 0    | 0         | 0.0   | 0   | 0         | 0.0   | 0.0   | 3     | 68,928      | 0.0   | 97.6  | 0   | 0       | 0.0   | 0.0      |  |
| ぎふし事業承継特別資金      | 0    | 0         | 0.0   | 0   | 0         | 0.0   | 0.0   | 48    | 2,947,308   | 2.1   | 521.6 | 0   | 0       | 0.0   | 0.0      |  |
| ぎふし危機関連資金        | 1    | 77,000    | 3.2   | 1   | 77,000    | 2.0   | 3.2   | 147   | 6,293,303   | 4.5   | 367.8 | 0   | 0       | 0.0   | 0.0      |  |
| ぎふし新型コロナ対応資金     | 131  | 2,503,900 | 0.0   | 131 | 2,503,900 | 65.3  | 0.0   | 3,990 | 67,753,774  | 48.3  | 0.0   | 1   | 2,494   | 0.9   | 0.0      |  |
| ぎふし伴走支援型特別資金     | 2    | 20,000    | 0.0   | 2   | 20,000    | 0.5   | 0.0   | 0     | 0           | 0.0   | 0.0   | 0   | 0       | 0.0   | 0.0      |  |
| その他              | 0    | 0         | 0.0   | 0   | 0         | 0.0   | 0.0   | 43    | 349,614     | 0.2   | 81.3  | 0   | 0       | 0.0   | 0.0      |  |
| 合計               | 207  | 3,834,285 | 49.2  | 207 | 3,834,285 | 100.0 | 49.2  | 9,795 | 140,194,812 | 100.0 | 182.3 | 6   | 274,062 | 100.0 | 3,367.8  |  |