

○事業概況【平成30年11月】

(単位:千円、%)

| 当月中 | | 当月中 前年比 | 項目 | | 当期中 | | 当月末 前年比 |
|-----|-----------|------------|------------|--------|------------|------------|------------|
| 件数 | 金額 | | | | 件数 | 金額 | |
| / | / | / | 保証 申込 | 期首繰越 A | 15 | 108,250 | 25.4 |
| 193 | 3,647,129 | 98.0 | | 当期中 B | 1,422 | 22,340,923 | 92.0 |
| 0 | 0 | 0.0 | 拒絶 C | 0 | 0 | 0.0 | |
| 2 | 21,000 | 22.1 | 申込取消 D | 15 | 151,200 | 30.8 | |
| / | 0 | 0.0 | 査定減額 E | / | 8,160 | 12.7 | |
| / | / | / | 調査中 F | 13 | 331,500 | 116.6 | |
| / | / | / | 保証 承諾 | 期首繰越 G | 7,222 | 80,617,242 | 91.7 |
| 191 | 3,571,919 | 99.2 | | 当期中 H | 1,409 | 21,958,313 | 92.0 |
| 2 | 68,000 | 226.7 | 保証後取消 I | 10 | 192,000 | 60.7 | |
| 178 | 3,156,447 | 101.6 | 償還 J | 1,606 | 25,471,953 | 102.9 | |
| 19 | 208,826 | 74.7 | 代位弁済(元金) K | 77 | 1,028,312 | 69.9 | |
| / | / | / | 貸付報告未着 L | 111 | 2,326,300 | 97.3 | |
| / | / | / | 保証債務残高 M | 6,827 | 73,556,990 | 88.8 | |
| / | / | / | 期首求償権残高 N | 241 | 784,894 | 128.6 | |
| 19 | 208,826 | 74.7 | 代位 弁済 | 元金 | 77 | 1,028,312 | 69.9 |
| / | 1,278 | 197.3 | | 利息 | / | 4,092 | 89.5 |
| 19 | 210,104 | 75.0 | | 合計 O | 77 | 1,032,404 | 70.0 |
| 0 | 237 | 4.2 | 回収 P | 8 | 106,245 | 123.8 | |
| 0 | 0 | 0.0 | 償却 Q | 0 | 0 | 0.0 | |
| / | / | / | 求償権残高 R | 310 | 1,711,053 | 92.4 | |

A+B=C+D+E+F+H

G+H=I+J+K+L+M

N+O=P+Q+R

実績月別推移表

○保証承諾

(単位:千円、%)

| | 平成28年度 | | 平成29年度 | | 平成30年度 | | |
|-----|--------|------------|--------|------------|--------|------------|-------|
| | 件数 | 金額 | 件数 | 金額 | 件数 | 金額 | 前年比 |
| 4月 | 105 | 1,776,023 | 146 | 2,108,757 | 131 | 1,421,342 | 67.4 |
| 5月 | 126 | 1,564,675 | 166 | 2,915,378 | 198 | 2,583,280 | 88.6 |
| 6月 | 199 | 2,794,844 | 199 | 3,165,105 | 205 | 2,749,042 | 86.9 |
| 7月 | 171 | 2,377,079 | 162 | 2,460,136 | 168 | 2,395,911 | 97.4 |
| 8月 | 163 | 2,331,072 | 208 | 3,748,461 | 196 | 4,040,835 | 107.8 |
| 9月 | 175 | 2,086,740 | 221 | 3,358,542 | 177 | 2,677,910 | 79.7 |
| 10月 | 104 | 1,088,903 | 148 | 2,507,058 | 143 | 2,518,075 | 100.4 |
| 11月 | 138 | 2,006,140 | 187 | 3,599,775 | 191 | 3,571,919 | 99.2 |
| 12月 | 195 | 3,033,238 | 194 | 3,787,854 | | | |
| 1月 | 233 | 4,601,502 | 154 | 2,916,560 | | | |
| 2月 | 300 | 5,811,320 | 162 | 2,586,711 | | | |
| 3月 | 294 | 5,764,920 | 193 | 3,084,330 | | | |
| 合計 | 2,203 | 35,236,456 | 2,140 | 36,238,666 | 1,409 | 21,958,313 | 92.0 |

○保証債務残高

(単位:千円、%)

| | 平成28年度 | | 平成29年度 | | 平成30年度 | | |
|-----|--------|------------|--------|------------|--------|------------|------|
| | 件数 | 金額 | 件数 | 金額 | 件数 | 金額 | 前年比 |
| 4月 | 7,684 | 81,719,294 | 7,678 | 86,307,684 | 7,131 | 78,762,794 | 91.3 |
| 5月 | 7,641 | 80,910,908 | 7,616 | 86,074,225 | 7,098 | 77,954,198 | 90.6 |
| 6月 | 7,567 | 80,467,517 | 7,572 | 86,331,715 | 7,046 | 77,332,261 | 89.6 |
| 7月 | 7,544 | 80,120,589 | 7,559 | 85,936,342 | 6,997 | 76,519,093 | 89.0 |
| 8月 | 7,513 | 80,123,343 | 7,551 | 85,608,453 | 6,973 | 75,991,515 | 88.8 |
| 9月 | 7,501 | 79,968,064 | 7,527 | 84,841,999 | 6,917 | 75,084,898 | 88.5 |
| 10月 | 7,465 | 79,075,376 | 7,460 | 83,833,717 | 6,878 | 74,480,200 | 88.8 |
| 11月 | 7,399 | 78,050,141 | 7,427 | 82,838,421 | 6,827 | 73,556,990 | 88.8 |
| 12月 | 7,365 | 77,972,206 | 7,352 | 82,212,085 | | | |
| 1月 | 7,393 | 78,983,232 | 7,308 | 81,057,542 | | | |
| 2月 | 7,498 | 82,146,330 | 7,263 | 80,467,471 | | | |
| 3月 | 7,676 | 86,604,221 | 7,186 | 80,353,710 | | | |

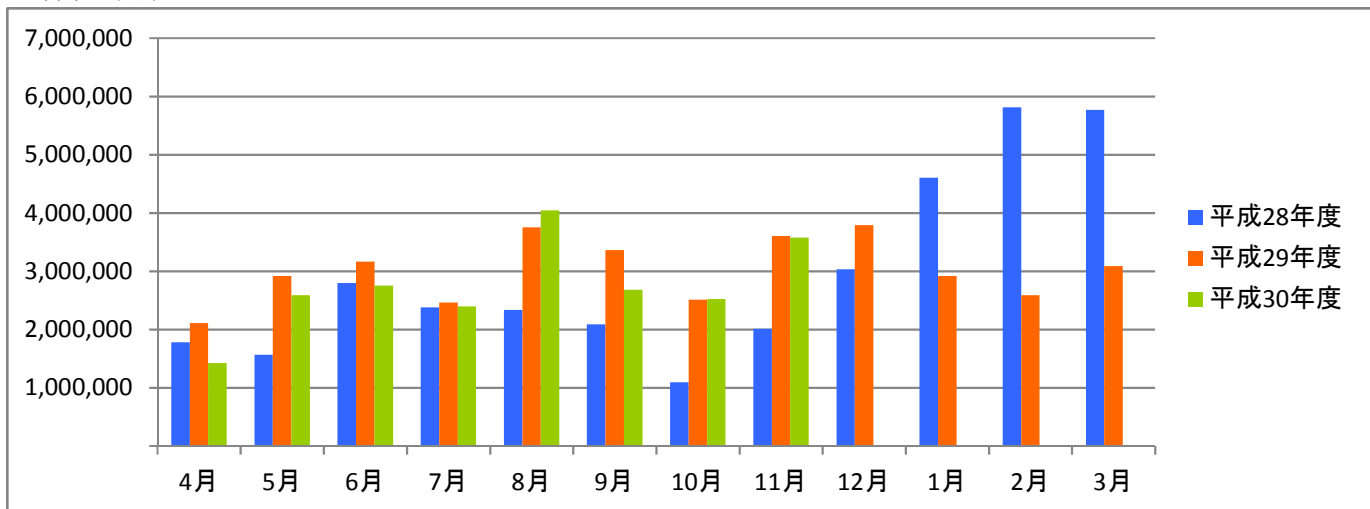
○代位弁済

(単位:千円、%)

| | 平成28年度 | | 平成29年度 | | 平成30年度 | | |
|-----|--------|---------|--------|-----------|--------|-----------|---------|
| | 件数 | 金額 | 件数 | 金額 | 件数 | 金額 | 前年比 |
| 4月 | 7 | 52,811 | 2 | 3,872 | 12 | 242,963 | 6,274.4 |
| 5月 | 11 | 45,127 | 31 | 260,322 | 5 | 11,750 | 4.5 |
| 6月 | 13 | 123,281 | 6 | 22,061 | 7 | 106,690 | 483.6 |
| 7月 | 10 | 101,371 | 18 | 245,821 | 10 | 210,478 | 85.6 |
| 8月 | 10 | 79,513 | 9 | 197,220 | 7 | 82,688 | 41.9 |
| 9月 | 9 | 131,534 | 12 | 208,102 | 9 | 97,956 | 47.1 |
| 10月 | 11 | 125,271 | 13 | 257,284 | 8 | 69,775 | 27.1 |
| 11月 | 8 | 119,215 | 19 | 280,049 | 19 | 210,104 | 75.0 |
| 12月 | 2 | 11,497 | 11 | 387,089 | | | |
| 1月 | 6 | 30,865 | 11 | 279,082 | | | |
| 2月 | 6 | 53,773 | 7 | 62,568 | | | |
| 3月 | 3 | 123,899 | 7 | 109,854 | | | |
| 合計 | 96 | 998,156 | 146 | 2,313,323 | 77 | 1,032,404 | 70.0 |

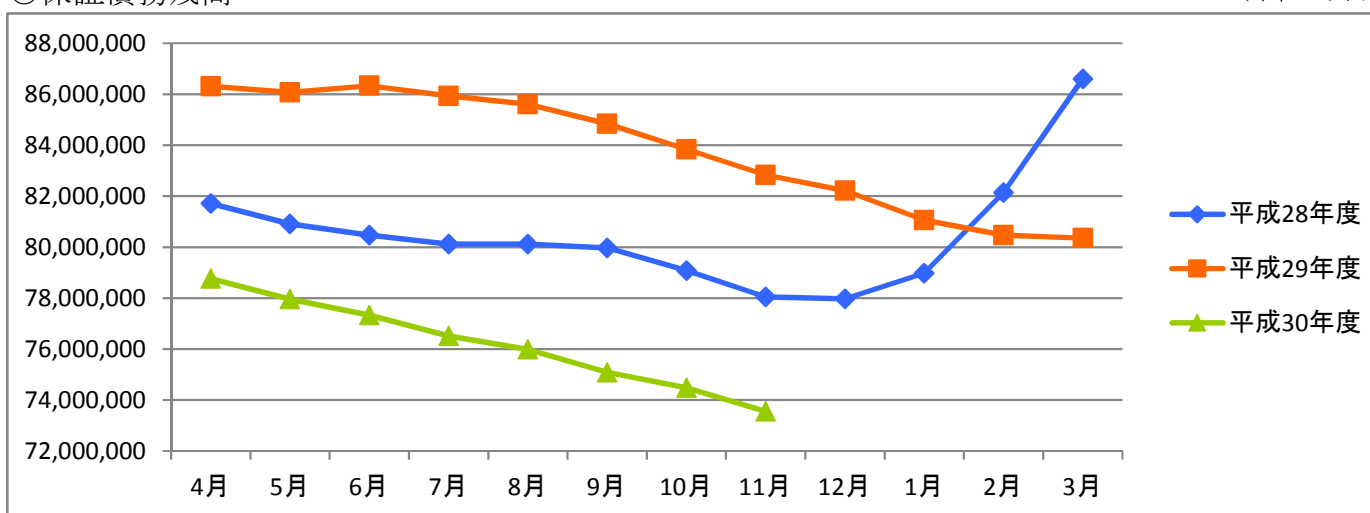
○保証承諾

(単位:千円)



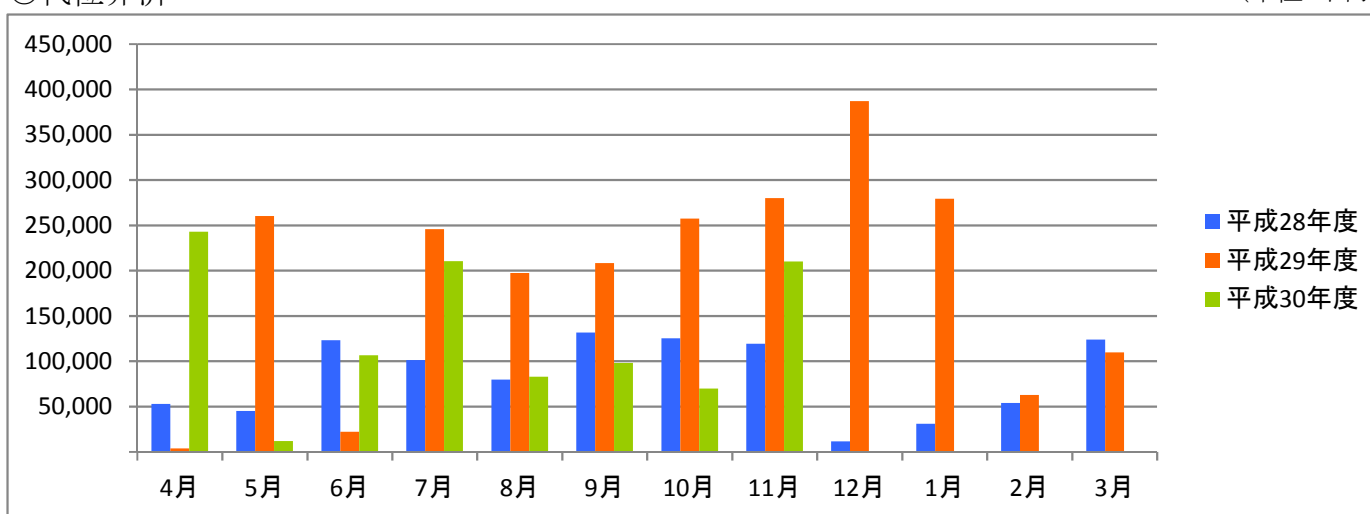
○保証債務残高

(単位:千円)



○代位弁済

(単位:千円)



資金使途別・金額別・期間別保証状況

○資金使途別保証状況【平成30年11月】

(単位:千円、%)

| 区分 | 保証承諾 | | | | | | | | 保証債務残高 | | | | 代位弁済 | | | |
|--------|------|-----------|-------|-------|------------|-------|-------|-------|------------|-------|------|-----|-----------|-------|---------|--|
| | 当月中 | | | 当期中 | | | | 当期中 | | | | 当期中 | | | | |
| | 件数 | 金額 | 前年比 | 件数 | 金額 | 構成比 | 前年比 | 件数 | 金額 | 構成比 | 前年比 | 件数 | 金額 | 構成比 | 前年比 | |
| 運転資金 | 157 | 3,211,959 | 98.1 | 1,131 | 19,200,653 | 87.4 | 89.7 | 5,213 | 61,346,422 | 83.4 | 89.0 | 64 | 778,170 | 75.4 | 54.3 | |
| 設備資金 | 12 | 91,660 | 107.6 | 84 | 572,640 | 2.6 | 113.3 | 700 | 4,268,896 | 5.8 | 87.0 | 4 | 101,873 | 9.9 | 7,886.2 | |
| 運転設備資金 | 22 | 268,300 | 111.9 | 194 | 2,185,020 | 10.0 | 111.5 | 914 | 7,941,672 | 10.8 | 88.1 | 9 | 152,360 | 14.8 | 371.5 | |
| 合計 | 191 | 3,571,919 | 99.2 | 1,409 | 21,958,313 | 100.0 | 92.0 | 6,827 | 73,556,990 | 100.0 | 88.8 | 77 | 1,032,404 | 100.0 | 70.0 | |

○金額別保証状況【平成30年11月】

(単位:千円、%)

| 区分 | 保証承諾 | | | | | | | | 保証債務残高 | | | | 代位弁済 | | | |
|-----------|------|-----------|-------|-------|------------|-------|-------|-------|------------|-------|-------|-----|-----------|-------|-------|--|
| | 当月中 | | | 当期中 | | | | 当期中 | | | | 当期中 | | | | |
| | 件数 | 金額 | 前年比 | 件数 | 金額 | 構成比 | 前年比 | 件数 | 金額 | 構成比 | 前年比 | 件数 | 金額 | 構成比 | 前年比 | |
| 100万円以下 | 6 | 6,000 | 67.0 | 69 | 58,773 | 0.3 | 112.0 | 237 | 120,287 | 0.2 | 98.9 | 1 | 762 | 0.1 | 0.0 | |
| 200万円以下 | 11 | 20,550 | 96.0 | 102 | 180,761 | 0.8 | 92.0 | 487 | 506,700 | 0.7 | 91.8 | 4 | 4,000 | 0.4 | 53.6 | |
| 300万円以下 | 17 | 48,390 | 153.1 | 152 | 434,732 | 2.0 | 140.2 | 581 | 1,042,138 | 1.4 | 106.8 | 6 | 6,983 | 0.7 | 76.1 | |
| 500万円以下 | 27 | 127,720 | 128.2 | 197 | 901,544 | 4.1 | 95.3 | 1,048 | 2,952,388 | 4.0 | 90.2 | 11 | 32,732 | 3.2 | 67.4 | |
| 1,000万円以下 | 37 | 318,659 | 104.9 | 316 | 2,690,772 | 12.3 | 106.6 | 1,496 | 8,146,310 | 11.1 | 93.0 | 10 | 46,750 | 4.5 | 34.2 | |
| 1,500万円以下 | 17 | 235,800 | 99.2 | 112 | 1,561,700 | 7.1 | 88.7 | 660 | 5,779,256 | 7.9 | 91.5 | 9 | 75,678 | 7.3 | 110.2 | |
| 2,000万円以下 | 19 | 373,000 | 79.9 | 130 | 2,531,100 | 11.5 | 93.5 | 630 | 7,815,895 | 10.6 | 92.6 | 5 | 40,616 | 3.9 | 21.0 | |
| 3,000万円以下 | 16 | 455,000 | 121.0 | 120 | 3,320,291 | 15.1 | 82.0 | 679 | 11,900,949 | 16.2 | 86.2 | 14 | 259,507 | 25.1 | 225.7 | |
| 5,000万円以下 | 37 | 1,674,000 | 91.7 | 189 | 8,697,841 | 39.6 | 85.2 | 745 | 22,574,991 | 30.7 | 89.8 | 14 | 370,843 | 35.9 | 88.9 | |
| 6,000万円以下 | 1 | 60,000 | 51.3 | 7 | 401,000 | 1.8 | 99.5 | 65 | 2,334,694 | 3.2 | 81.3 | 1 | 47,503 | 4.6 | 176.8 | |
| 7,000万円以下 | 1 | 61,800 | 0.0 | 9 | 598,800 | 2.7 | 292.1 | 52 | 2,214,330 | 3.0 | 95.9 | 0 | 0 | 0.0 | 0.0 | |
| 8,000万円以下 | 1 | 80,000 | 0.0 | 4 | 320,000 | 1.5 | 203.8 | 85 | 3,500,266 | 4.8 | 84.5 | 0 | 0 | 0.0 | 0.0 | |
| 1億円以下 | 0 | 0 | 0.0 | 0 | 0 | 0.0 | 0.0 | 28 | 1,768,344 | 2.4 | 78.6 | 2 | 147,030 | 14.2 | 0.0 | |
| 2億円以下 | 1 | 111,000 | 100.0 | 2 | 261,000 | 1.2 | 108.3 | 34 | 2,900,442 | 3.9 | 74.8 | 0 | 0 | 0.0 | 0.0 | |
| 3億円以下 | 0 | 0 | 0.0 | 0 | 0 | 0.0 | 0.0 | 0 | 0 | 0.0 | 0.0 | 0 | 0 | 0.0 | 0.0 | |
| 4億円以下 | 0 | 0 | 0.0 | 0 | 0 | 0.0 | 0.0 | 0 | 0 | 0.0 | 0.0 | 0 | 0 | 0.0 | 0.0 | |
| 5億円以下 | 0 | 0 | 0.0 | 0 | 0 | 0.0 | 0.0 | 0 | 0 | 0.0 | 0.0 | 0 | 0 | 0.0 | 0.0 | |
| 5億円超 | 0 | 0 | 0.0 | 0 | 0 | 0.0 | 0.0 | 0 | 0 | 0.0 | 0.0 | 0 | 0 | 0.0 | 0.0 | |
| 合計 | 191 | 3,571,919 | 99.2 | 1,409 | 21,958,313 | 100.0 | 92.0 | 6,827 | 73,556,990 | 100.0 | 88.8 | 77 | 1,032,404 | 100.0 | 70.0 | |

○期間別保証状況【平成30年11月】

(単位:千円、%)

| 区分 | 保証承諾 | | | | | | | | 保証債務残高 | | | | 代位弁済 | | | |
|-------|------|-----------|-------|-------|------------|-------|-------|-------|------------|-------|-------|-----|-----------|-------|-------|--|
| | 当月中 | | | 当期中 | | | | 当期中 | | | | 当期中 | | | | |
| | 件数 | 金額 | 前年比 | 件数 | 金額 | 構成比 | 前年比 | 件数 | 金額 | 構成比 | 前年比 | 件数 | 金額 | 構成比 | 前年比 | |
| 3カ月以下 | 0 | 0 | 0.0 | 10 | 149,990 | 0.7 | 45.4 | 4 | 93,000 | 0.1 | 75.3 | 0 | 0 | 0.0 | 0.0 | |
| 6カ月以下 | 7 | 78,500 | 54.1 | 39 | 527,490 | 2.4 | 24.4 | 30 | 425,526 | 0.6 | 34.6 | 1 | 4,925 | 0.5 | 7.5 | |
| 1年以下 | 84 | 2,180,100 | 93.6 | 527 | 11,897,171 | 54.2 | 90.5 | 826 | 18,377,989 | 25.0 | 104.4 | 3 | 61,741 | 6.0 | 98.0 | |
| 2年以下 | 14 | 173,000 | 87.6 | 128 | 1,589,000 | 7.2 | 123.3 | 405 | 4,247,775 | 5.8 | 87.0 | 1 | 3,348 | 0.3 | 2.3 | |
| 3年以下 | 4 | 7,500 | 52.4 | 59 | 216,150 | 1.0 | 121.8 | 213 | 618,202 | 0.8 | 69.7 | 0 | 0 | 0.0 | 0.0 | |
| 4年以下 | 2 | 4,650 | 51.7 | 14 | 82,880 | 0.4 | 151.4 | 80 | 262,389 | 0.4 | 88.9 | 0 | 0 | 0.0 | 0.0 | |
| 5年以下 | 31 | 254,710 | 266.7 | 229 | 1,271,518 | 5.8 | 126.7 | 1,272 | 5,627,812 | 7.7 | 87.4 | 13 | 56,511 | 5.5 | 79.8 | |
| 7年以下 | 33 | 414,900 | 119.1 | 289 | 3,321,212 | 15.1 | 113.3 | 2,490 | 19,562,567 | 26.6 | 83.9 | 25 | 289,766 | 28.1 | 100.1 | |
| 10年以下 | 16 | 458,559 | 154.6 | 108 | 2,770,972 | 12.6 | 109.3 | 1,318 | 19,215,871 | 26.1 | 88.7 | 29 | 482,651 | 46.8 | 73.6 | |
| 10年超 | 0 | 0 | 0.0 | 6 | 131,930 | 0.6 | 54.0 | 189 | 5,125,860 | 7.0 | 80.0 | 5 | 133,463 | 12.9 | 73.3 | |
| 合計 | 191 | 3,571,919 | 99.2 | 1,409 | 21,958,313 | 100.0 | 92.0 | 6,827 | 73,556,990 | 100.0 | 88.8 | 77 | 1,032,404 | 100.0 | 70.0 | |

○業種別保証状況【平成30年11月】

(単位:千円、%)

| 区分 | 保証承諾 | | | | | | | | 保証債務残高 | | | | 代位弁済 | | | |
|-------------|------|-----------|---------|-------|------------|-------|-------|-------|------------|-------|-------|----|-----------|-------|---------|--|
| | 当月中 | | | 当期中 | | | | | 当期中 | | | | 当期中 | | | |
| | 件数 | 金額 | 前年比 | 件数 | 金額 | 構成比 | 前年比 | 件数 | 金額 | 構成比 | 前年比 | 件数 | 金額 | 構成比 | 前年比 | |
| 製造業 | 33 | 805,200 | 130.2 | 206 | 3,675,050 | 16.7 | 96.9 | 1,099 | 12,985,486 | 17.7 | 85.4 | 19 | 286,306 | 27.7 | 111.3 | |
| 食料品工業 | 2 | 85,000 | 283.3 | 23 | 588,500 | 2.7 | 167.2 | 102 | 1,825,366 | 2.5 | 90.5 | 3 | 98,522 | 9.5 | 138.8 | |
| 繊維品工業 | 9 | 126,700 | 238.2 | 51 | 719,100 | 3.3 | 105.0 | 281 | 2,302,074 | 3.1 | 83.5 | 9 | 87,338 | 8.5 | 318.8 | |
| 木材・木製品工業 | 1 | 18,000 | 0.0 | 5 | 138,000 | 0.6 | 200.6 | 28 | 310,972 | 0.4 | 91.7 | 0 | 0 | 0.0 | 0.0 | |
| 家具・建具工業 | 2 | 100,000 | 166.7 | 9 | 170,310 | 0.8 | 122.0 | 62 | 726,047 | 1.0 | 91.1 | 0 | 0 | 0.0 | 0.0 | |
| 紙工業 | 4 | 63,000 | 315.0 | 10 | 114,500 | 0.5 | 125.8 | 31 | 482,096 | 0.7 | 97.2 | 0 | 0 | 0.0 | 0.0 | |
| 印刷・製本業 | 2 | 30,000 | 98.0 | 21 | 337,310 | 1.5 | 99.0 | 107 | 1,546,883 | 2.1 | 87.1 | 1 | 3,038 | 0.3 | 2.0 | |
| 化学工業 | 0 | 0 | 0.0 | 2 | 65,000 | 0.3 | 61.9 | 10 | 106,454 | 0.1 | 41.3 | 0 | 0 | 0.0 | 0.0 | |
| 石油・石炭製品工業 | 0 | 0 | 0.0 | 0 | 0 | 0.0 | 0.0 | 0 | 0 | 0.0 | 0.0 | 0 | 0 | 0.0 | 0.0 | |
| ゴム・プラスチック工業 | 3 | 98,000 | 116.0 | 9 | 167,000 | 0.8 | 87.1 | 48 | 616,512 | 0.8 | 98.6 | 0 | 0 | 0.0 | 0.0 | |
| ゴム製品製造業 | 0 | 0 | 0.0 | 0 | 0 | 0.0 | 0.0 | 2 | 8,226 | 0.0 | 91.0 | 0 | 0 | 0.0 | 0.0 | |
| 皮革工業 | 0 | 0 | 0.0 | 0 | 0 | 0.0 | 0.0 | 0 | 0 | 0.0 | 0.0 | 0 | 0 | 0.0 | 0.0 | |
| 窯業 | 0 | 0 | 0.0 | 0 | 0 | 0.0 | 0.0 | 13 | 315,081 | 0.4 | 92.8 | 0 | 0 | 0.0 | 0.0 | |
| 機械工業 | 6 | 243,000 | 81.0 | 22 | 657,560 | 3.0 | 102.8 | 85 | 1,227,045 | 1.7 | 75.0 | 1 | 3,391 | 0.3 | 0.0 | |
| 電気機器工業 | 0 | 0 | 0.0 | 4 | 60,000 | 0.3 | 206.9 | 18 | 240,434 | 0.3 | 97.8 | 0 | 0 | 0.0 | 0.0 | |
| 車輜工業 | 0 | 0 | 0.0 | 4 | 31,000 | 0.1 | 0.0 | 11 | 93,529 | 0.1 | 79.7 | 0 | 0 | 0.0 | 0.0 | |
| 船舶工業 | 0 | 0 | 0.0 | 0 | 0 | 0.0 | 0.0 | 0 | 0 | 0.0 | 0.0 | 0 | 0 | 0.0 | 0.0 | |
| 金属工業 | 1 | 20,000 | 181.8 | 15 | 283,000 | 1.3 | 70.5 | 83 | 1,295,464 | 1.8 | 88.9 | 2 | 893 | 0.1 | 0.0 | |
| ソフトウェア業 | 1 | 15,000 | 83.3 | 7 | 128,000 | 0.6 | 44.1 | 38 | 404,601 | 0.6 | 72.5 | 0 | 0 | 0.0 | 0.0 | |
| 情報処理サービス業 | 0 | 0 | 0.0 | 0 | 0 | 0.0 | 0.0 | 6 | 18,401 | 0.0 | 86.4 | 0 | 0 | 0.0 | 0.0 | |
| その他の工業 | 2 | 6,500 | 81.3 | 24 | 215,770 | 1.0 | 50.2 | 174 | 1,466,301 | 2.0 | 83.6 | 3 | 93,124 | 9.0 | 1,309.8 | |
| 農林漁業 | 0 | 0 | 0.0 | 0 | 0 | 0.0 | 0.0 | 3 | 37,018 | 0.1 | 85.6 | 0 | 0 | 0.0 | 0.0 | |
| 鉱業 | 0 | 0 | 0.0 | 0 | 0 | 0.0 | 0.0 | 4 | 46,160 | 0.1 | 83.1 | 0 | 0 | 0.0 | 0.0 | |
| 建設業 | 45 | 761,850 | 85.0 | 377 | 5,136,670 | 23.4 | 81.4 | 1,725 | 17,246,196 | 23.4 | 89.2 | 13 | 147,743 | 14.3 | 105.9 | |
| 卸売業 | 34 | 626,959 | 72.4 | 236 | 4,953,434 | 22.6 | 91.1 | 1,156 | 17,460,540 | 23.7 | 87.7 | 18 | 287,487 | 27.8 | 62.4 | |
| 小売業 | 29 | 625,600 | 106.3 | 177 | 2,971,568 | 13.5 | 95.0 | 919 | 9,549,917 | 13.0 | 90.6 | 11 | 107,357 | 10.4 | 26.6 | |
| 飲食店 | 9 | 157,400 | 222.0 | 88 | 925,155 | 4.2 | 138.1 | 378 | 2,593,765 | 3.5 | 88.4 | 5 | 104,778 | 10.1 | 583.0 | |
| 運送倉庫業 | 2 | 44,000 | 293.3 | 19 | 450,864 | 2.1 | 77.4 | 107 | 1,661,968 | 2.3 | 91.7 | 0 | 0 | 0.0 | 0.0 | |
| サービス業 | 36 | 498,910 | 103.0 | 257 | 3,249,098 | 14.8 | 90.3 | 1,191 | 9,757,080 | 13.3 | 91.4 | 10 | 97,660 | 9.5 | 56.6 | |
| 不動産業 | 2 | 37,000 | 1,057.1 | 34 | 415,074 | 1.9 | 325.7 | 161 | 1,276,341 | 1.7 | 90.5 | 1 | 1,072 | 0.1 | 7.7 | |
| その他の産業 | 1 | 15,000 | 26.3 | 15 | 181,400 | 0.8 | 98.0 | 84 | 942,517 | 1.3 | 101.8 | 0 | 0 | 0.0 | 0.0 | |
| 合計 | 191 | 3,571,919 | 99.2 | 1,409 | 21,958,313 | 100.0 | 92.0 | 6,827 | 73,556,990 | 100.0 | 88.8 | 77 | 1,032,404 | 100.0 | 70.0 | |

○金融機関別保証状況【平成30年11月】

(単位:千円、%)

| 区分 | 保証承諾 | | | | | | | 保証債務残高 | | | | 代位弁済 | | | |
|-----------|------|-----------|-------|-------|------------|-------|-------|--------|------------|-------|-------|------|-----------|-------|-------|
| | 当月中 | | | 当期中 | | | | 当期中 | | | | 当期中 | | | |
| | 件数 | 金額 | 前年比 | 件数 | 金額 | 構成比 | 前年比 | 件数 | 金額 | 構成比 | 前年比 | 件数 | 金額 | 構成比 | 前年比 |
| みずほ銀行 | 0 | 0 | 0.0 | 0 | 0 | 0.0 | 0.0 | 4 | 26,058 | 0.0 | 42.4 | 0 | 0 | 0.0 | 0.0 |
| 三菱東京UFJ銀行 | 0 | 0 | 0.0 | 2 | 60,000 | 0.3 | 17.9 | 19 | 277,760 | 0.4 | 58.2 | 0 | 0 | 0.0 | 0.0 |
| 三井住友銀行 | 0 | 0 | 0.0 | 0 | 0 | 0.0 | 0.0 | 2 | 33,390 | 0.0 | 86.7 | 0 | 0 | 0.0 | 0.0 |
| 小計 | 0 | 0 | 0.0 | 2 | 60,000 | 0.3 | 16.7 | 25 | 337,208 | 0.5 | 58.4 | 0 | 0 | 0.0 | 0.0 |
| 十六銀行 | 59 | 970,229 | 83.4 | 416 | 6,951,947 | 31.7 | 77.0 | 2,389 | 28,396,627 | 38.6 | 86.5 | 22 | 372,699 | 36.1 | 84.7 |
| 大垣共立銀行 | 17 | 363,390 | 100.9 | 123 | 2,352,252 | 10.7 | 84.8 | 773 | 8,782,081 | 11.9 | 83.6 | 15 | 213,636 | 20.7 | 106.7 |
| 北陸銀行 | 0 | 0 | 0.0 | 0 | 0 | 0.0 | 0.0 | 21 | 183,125 | 0.2 | 77.6 | 0 | 0 | 0.0 | 0.0 |
| 小計 | 76 | 1,333,619 | 87.6 | 539 | 9,304,199 | 42.4 | 78.9 | 3,183 | 37,361,833 | 50.8 | 85.8 | 37 | 586,335 | 56.8 | 91.6 |
| 愛知銀行 | 0 | 0 | 0.0 | 1 | 20,000 | 0.1 | 27.8 | 20 | 149,328 | 0.2 | 62.6 | 1 | 803 | 0.1 | 0.0 |
| 名古屋銀行 | 0 | 0 | 0.0 | 4 | 97,700 | 0.4 | 88.0 | 26 | 299,734 | 0.4 | 94.7 | 0 | 0 | 0.0 | 0.0 |
| 中京銀行 | 0 | 0 | 0.0 | 1 | 40,000 | 0.2 | 133.3 | 2 | 62,215 | 0.1 | 105.7 | 0 | 0 | 0.0 | 0.0 |
| 第三銀行 | 0 | 0 | 0.0 | 0 | 0 | 0.0 | 0.0 | 4 | 37,761 | 0.1 | 42.6 | 0 | 0 | 0.0 | 0.0 |
| 小計 | 0 | 0 | 0.0 | 6 | 157,700 | 0.7 | 74.0 | 52 | 549,037 | 0.7 | 78.2 | 1 | 803 | 0.1 | 149.1 |
| 岐阜信用金庫 | 95 | 2,053,000 | 110.7 | 695 | 10,936,920 | 49.8 | 108.0 | 2,970 | 31,189,792 | 42.4 | 91.7 | 32 | 400,013 | 38.7 | 49.5 |
| 大垣西濃信用金庫 | 2 | 21,000 | 91.3 | 32 | 222,225 | 1.0 | 83.6 | 103 | 716,655 | 1.0 | 113.3 | 1 | 757 | 0.1 | 0.0 |
| 関信用金庫 | 4 | 50,800 | 0.0 | 10 | 173,800 | 0.8 | 169.1 | 32 | 290,768 | 0.4 | 96.8 | 3 | 33,075 | 3.2 | 0.0 |
| 小計 | 101 | 2,124,800 | 113.1 | 737 | 11,332,945 | 51.6 | 108.0 | 3,105 | 32,197,215 | 43.8 | 92.1 | 36 | 433,844 | 42.0 | 53.6 |
| 商工組合中央金庫 | 0 | 0 | 0.0 | 2 | 10,400 | 0.0 | 56.5 | 10 | 146,340 | 0.2 | 106.6 | 0 | 0 | 0.0 | 0.0 |
| 日本政策金融公庫 | 0 | 0 | 0.0 | 0 | 0 | 0.0 | 0.0 | 0 | 0 | 0.0 | 0.0 | 0 | 0 | 0.0 | 0.0 |
| 小計 | 0 | 0 | 0.0 | 2 | 10,400 | 0.0 | 56.5 | 10 | 146,340 | 0.2 | 106.6 | 0 | 0 | 0.0 | 0.0 |
| 岐阜商工信用組合 | 14 | 113,500 | 99.8 | 123 | 1,093,070 | 5.0 | 113.1 | 432 | 2,922,614 | 4.0 | 102.7 | 3 | 11,421 | 1.1 | 92.0 |
| 小計 | 14 | 113,500 | 99.8 | 123 | 1,093,070 | 5.0 | 113.1 | 432 | 2,922,614 | 4.0 | 102.7 | 3 | 11,421 | 1.1 | 92.0 |
| ぎふ農業協同組合 | 0 | 0 | 0.0 | 0 | 0 | 0.0 | 0.0 | 20 | 42,743 | 0.1 | 71.8 | 0 | 0 | 0.0 | 0.0 |
| 小計 | 0 | 0 | 0.0 | 0 | 0 | 0.0 | 0.0 | 20 | 42,743 | 0.1 | 71.8 | 0 | 0 | 0.0 | 0.0 |
| 合計 | 191 | 3,571,919 | 99.2 | 1,409 | 21,958,313 | 100.0 | 92.0 | 6,827 | 73,556,990 | 100.0 | 88.8 | 77 | 1,032,404 | 100.0 | 70.0 |

○制度別保証状況【平成30年11月】

(単位:千円、%)

| 区分 | 保証承諾 | | | | | | | | 保証債務残高 | | | | 代位弁済 | | | |
|------------------|------|-----------|-------|-------|------------|-------|-------|-------|------------|-------|-------|----|-----------|-------|-------|--|
| | 当月中 | | | 当期中 | | | | | 当期中 | | | | 当期中 | | | |
| | 件数 | 金額 | 前年比 | 件数 | 金額 | 構成比 | 前年比 | 件数 | 金額 | 構成比 | 前年比 | 件数 | 金額 | 構成比 | 前年比 | |
| 協会制度 | 51 | 926,700 | 32.0 | 304 | 4,701,167 | 21.4 | 26.5 | 2,401 | 33,199,143 | 45.1 | 70.5 | 42 | 633,762 | 61.4 | 63.1 | |
| 普通保証 | 9 | 311,000 | 110.1 | 32 | 670,114 | 3.1 | 80.9 | 336 | 7,519,033 | 10.2 | 78.0 | 5 | 166,565 | 16.1 | 34.0 | |
| 無担保保証 | 21 | 219,700 | 108.1 | 121 | 1,400,400 | 6.4 | 81.7 | 789 | 6,353,923 | 8.6 | 82.8 | 8 | 120,196 | 11.6 | 110.1 | |
| 当座貸越根保証 | 6 | 112,000 | 74.7 | 64 | 1,251,000 | 5.7 | 126.5 | 161 | 3,040,534 | 4.1 | 86.1 | 1 | 3,348 | 0.3 | 0.0 | |
| 無担保当座貸越根保証 | 0 | 0 | 0.0 | 0 | 0 | 0.0 | 0.0 | 3 | 15,541 | 0.0 | 71.5 | 0 | 0 | 0.0 | 0.0 | |
| 事業者カードローン当座貸越根保証 | 8 | 61,000 | 135.6 | 51 | 360,500 | 1.6 | 112.0 | 200 | 1,201,885 | 1.6 | 91.0 | 0 | 0 | 0.0 | 0.0 | |
| 長期経営資金保証 | 0 | 0 | 0.0 | 0 | 0 | 0.0 | 0.0 | 19 | 708,104 | 1.0 | 89.3 | 2 | 34,411 | 3.3 | 0.0 | |
| 中小企業特定社債保 | 2 | 120,000 | 0.0 | 3 | 144,000 | 0.7 | 450.0 | 30 | 1,042,400 | 1.4 | 105.9 | 0 | 0 | 0.0 | 0.0 | |
| 経営安定関連保証 | 0 | 0 | 0.0 | 2 | 100,000 | 0.5 | 92.3 | 137 | 1,680,800 | 2.3 | 75.7 | 7 | 140,913 | 13.6 | 232.7 | |
| 経営革新関連保証 | 0 | 0 | 0.0 | 0 | 0 | 0.0 | 0.0 | 1 | 13,740 | 0.0 | 72.2 | 0 | 0 | 0.0 | 0.0 | |
| 小口零細企業保証 | 1 | 5,000 | 666.7 | 3 | 9,500 | 0.0 | 140.7 | 12 | 22,493 | 0.0 | 88.7 | 0 | 0 | 0.0 | 0.0 | |
| 東日本大震災復興緊急保証 | 0 | 0 | 0.0 | 0 | 0 | 0.0 | 0.0 | 18 | 342,380 | 0.5 | 77.4 | 2 | 19,829 | 1.9 | 0.0 | |
| 経営力強化保証 | 1 | 32,000 | 0.0 | 12 | 424,323 | 1.9 | 206.0 | 30 | 772,738 | 1.1 | 107.0 | 2 | 14,821 | 1.4 | 154.6 | |
| 経営者保証ガイドライン対応保証 | 0 | 0 | 0.0 | 0 | 0 | 0.0 | 0.0 | 0 | 0 | 0.0 | 0.0 | 0 | 0 | 0.0 | 0.0 | |
| 事業再生保証 | 0 | 0 | 0.0 | 2 | 8,930 | 0.0 | 0.0 | 4 | 38,187 | 0.1 | 123.9 | 0 | 0 | 0.0 | 0.0 | |
| アシスト450 | 1 | 6,000 | 0.3 | 5 | 87,400 | 0.4 | 0.7 | 309 | 7,465,005 | 10.1 | 46.4 | 2 | 51,845 | 5.0 | 0.0 | |
| 税理士連携 | 2 | 60,000 | 0.0 | 9 | 245,000 | 1.1 | 0.0 | 4 | 120,000 | 0.2 | 0.0 | 0 | 0 | 0.0 | 0.0 | |
| その他 | 0 | 0 | 0.0 | 0 | 0 | 0.0 | 0.0 | 348 | 2,862,381 | 3.9 | 78.9 | 13 | 81,833 | 7.9 | 26.0 | |
| 岐阜市制度 | 140 | 2,645,219 | 374.8 | 1,105 | 17,257,147 | 78.6 | 280.4 | 4,426 | 40,357,847 | 54.9 | 113.0 | 35 | 398,642 | 38.6 | 84.7 | |
| 中小企業振興資金 | 6 | 36,000 | 120.0 | 37 | 222,920 | 1.0 | 102.4 | 260 | 1,120,322 | 1.5 | 84.8 | 4 | 28,031 | 2.7 | 69.9 | |
| 経営環境変動対策資金 | 16 | 238,500 | 114.0 | 90 | 1,283,300 | 5.8 | 94.7 | 1,173 | 10,951,750 | 14.9 | 75.9 | 13 | 154,978 | 15.0 | 46.5 | |
| ぎふしアシスト短期資金 | 70 | 1,794,600 | 0.0 | 438 | 10,548,100 | 48.0 | 0.0 | 379 | 8,997,200 | 12.2 | 0.0 | 0 | 0 | 0.0 | 0.0 | |
| 創業者支援資金 | 1 | 2,000 | 66.7 | 17 | 88,500 | 0.4 | 234.1 | 160 | 447,337 | 0.6 | 88.7 | 0 | 0 | 0.0 | 0.0 | |
| みらい戦略資金 | 0 | 0 | 0.0 | 1 | 15,000 | 0.1 | 0.0 | 15 | 111,732 | 0.2 | 114.0 | 0 | 0 | 0.0 | 0.0 | |
| 雇用促進資金 | 0 | 0 | 0.0 | 6 | 105,000 | 0.5 | 107.1 | 105 | 877,698 | 1.2 | 75.5 | 2 | 25,833 | 2.5 | 0.0 | |
| ぎふし返済おまとめ資金 | 1 | 10,000 | 0.0 | 3 | 26,000 | 0.1 | 0.0 | 26 | 227,450 | 0.3 | 84.9 | 0 | 0 | 0.0 | 0.0 | |
| 小口零細企業資金 | 29 | 112,860 | 131.2 | 335 | 1,402,188 | 6.4 | 146.8 | 1,520 | 4,001,082 | 5.4 | 104.8 | 9 | 29,503 | 2.9 | 0.0 | |
| 短期資金 | 7 | 85,500 | 67.3 | 57 | 633,980 | 2.9 | 72.8 | 69 | 737,150 | 1.0 | 81.1 | 0 | 0 | 0.0 | 0.0 | |
| 企業誘致等金 | 0 | 0 | 0.0 | 0 | 0 | 0.0 | 0.0 | 39 | 428,984 | 0.6 | 61.4 | 1 | 66,521 | 6.4 | 0.0 | |
| ぎふし経営力強化資金 | 10 | 365,759 | 168.1 | 117 | 2,809,159 | 12.8 | 113.5 | 605 | 11,040,560 | 15.0 | 100.2 | 5 | 93,640 | 9.1 | 342.7 | |
| 事業所建設等金 | 0 | 0 | 0.0 | 4 | 123,000 | 0.6 | 86.3 | 50 | 1,174,693 | 1.6 | 99.2 | 0 | 0 | 0.0 | 0.0 | |
| ぎふし事業承継資金 | 0 | 0 | 0.0 | 0 | 0 | 0.0 | 0.0 | 0 | 0 | 0.0 | 0.0 | 0 | 0 | 0.0 | 0.0 | |
| その他 | 0 | 0 | 0.0 | 0 | 0 | 0.0 | 0.0 | 25 | 241,890 | 0.3 | 80.1 | 1 | 136 | 0.0 | 0.5 | |
| 合計 | 191 | 3,571,919 | 99.2 | 1,409 | 21,958,313 | 100.0 | 92.0 | 6,827 | 73,556,990 | 100.0 | 88.8 | 77 | 1,032,404 | 100.0 | 70.0 | |